



C113
R71

C94
C91
C93

R68
R8
C6

C81

R12
R11

R9
R10

C108
C107
C109
C106

C20

R33
R50

C87
R72
R70
R73

C2

C3

C83

C73

C77

R67

C92

C112

C85
C10

C9

C110
C115
C116

R57
R56
R55

C17
C78
C102
C88

C103

C16

C27
C26
C25
R18
R17
R19
R21

C29

C28
R24
C37
C96

R23
R74
R65
C69
R64

C22

C90

C7

C8
C14

TTTTTTTTT
TTTTTTTTT

C19
R69
C82

C18
R14
R15

R1

R54

R53

R32

R31

C39

R49

C89

C114

C80

R34
R35
R36
R40
C45

R52
R37
R38
R43

C47
R41
C48

R42

R58

R66

C76

R6
R7

R4
R5

R3
R81

R80
R82

R83
R77
R79

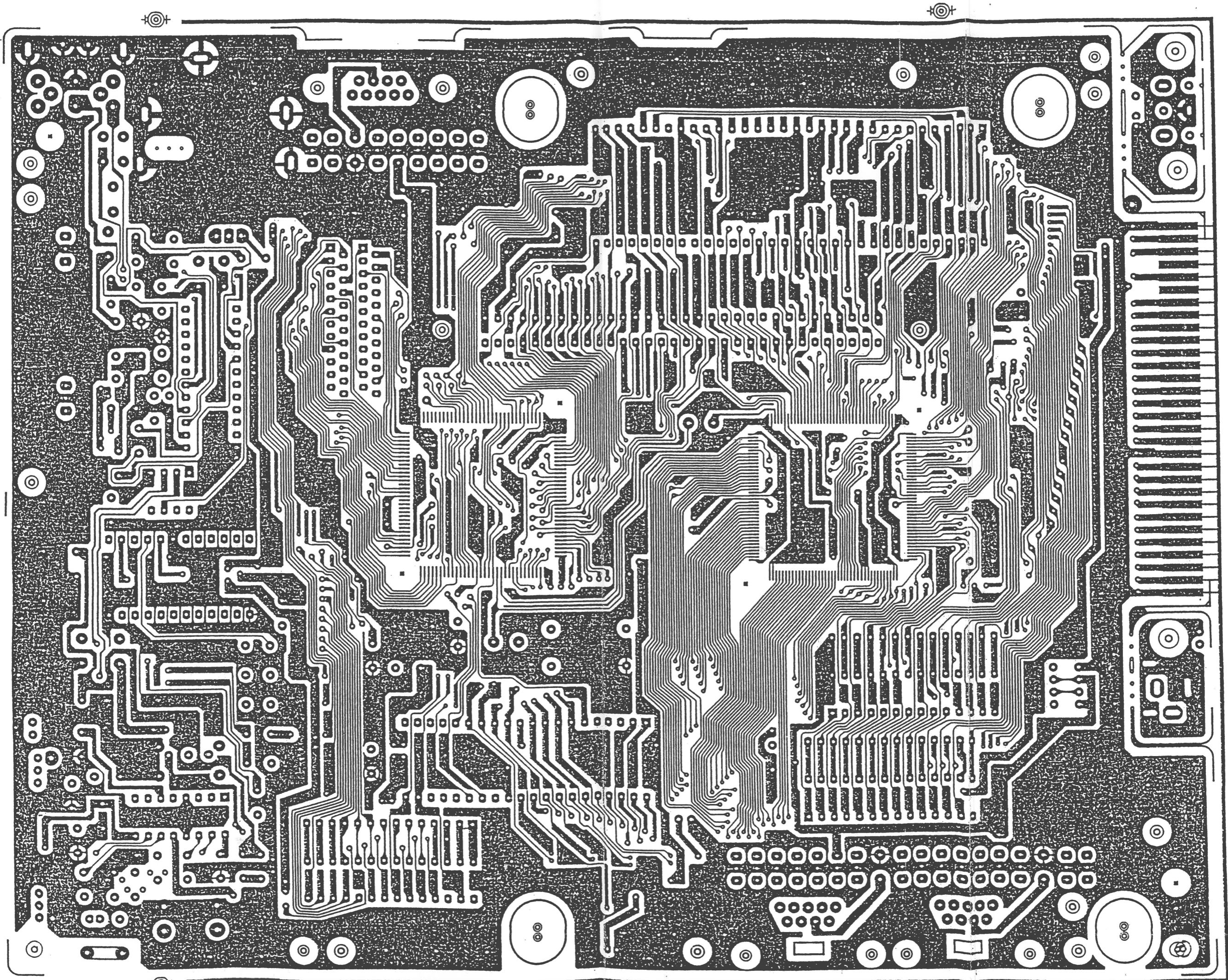
R84
R59

R78
C15

R51
C46

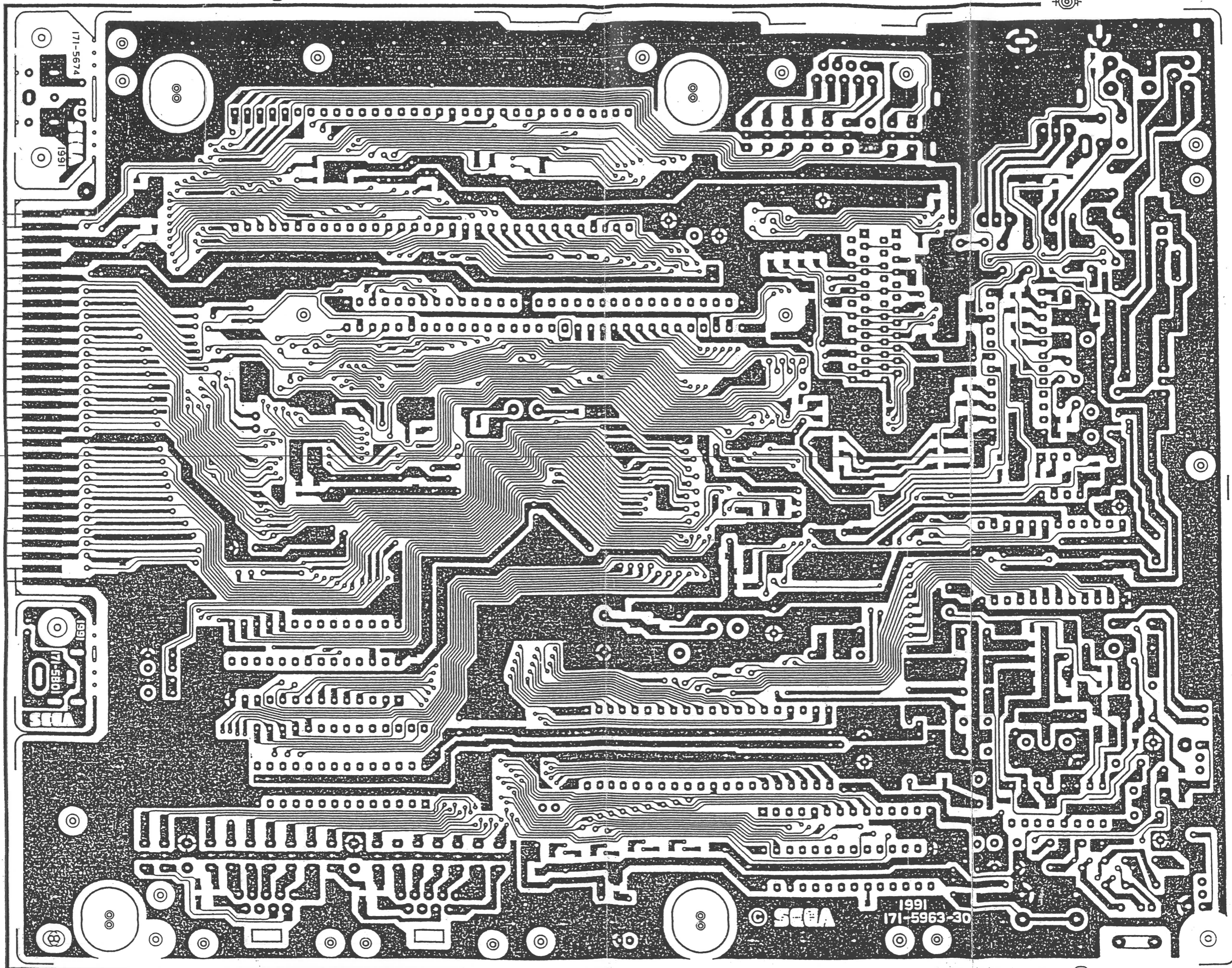
C75

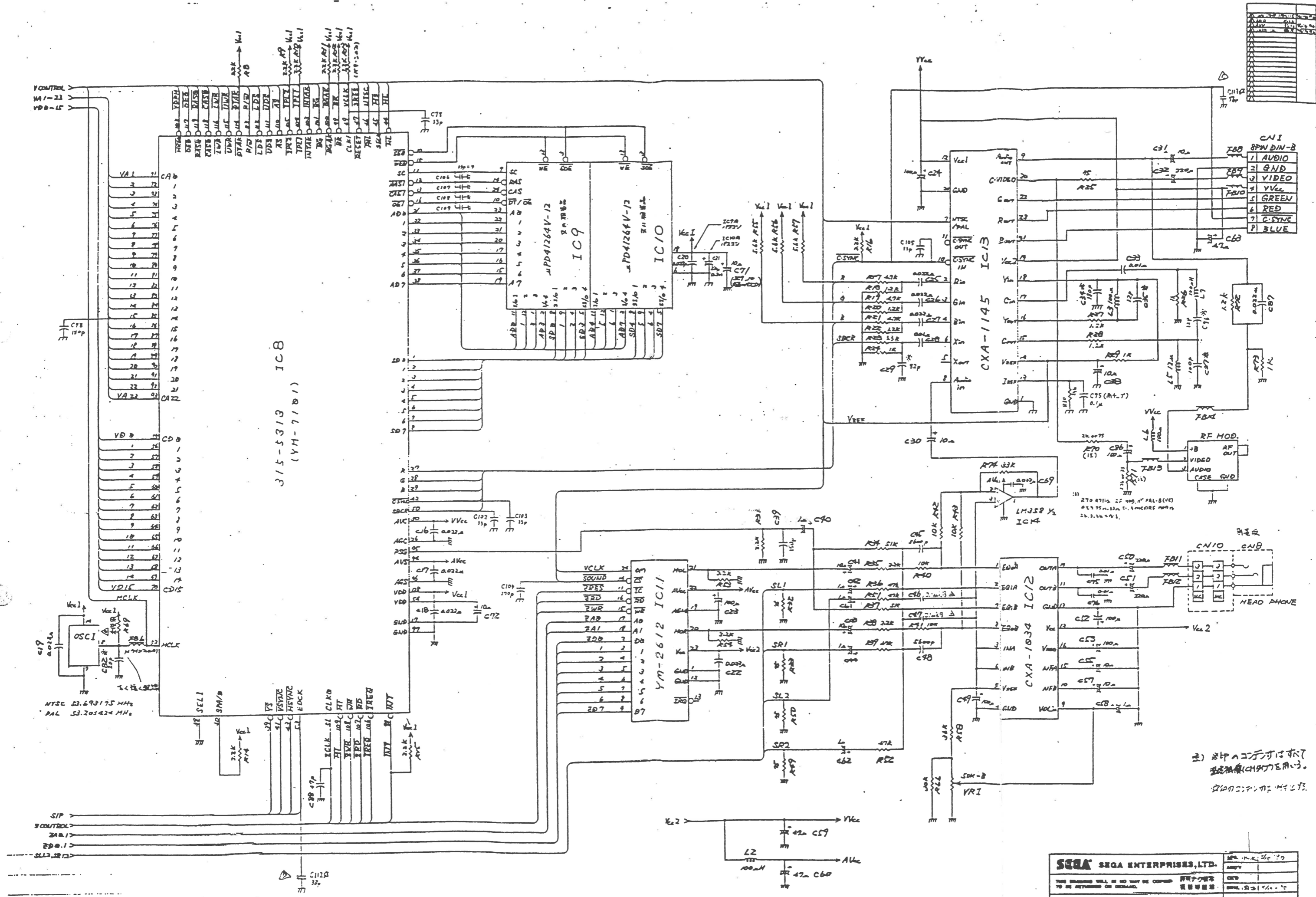




部品面 171-5963-20A 91.1.19
171-5963-30 91.5.17 22

半田面 71-5963-20A 21, '91. 5. 19
171-5963-30 変更



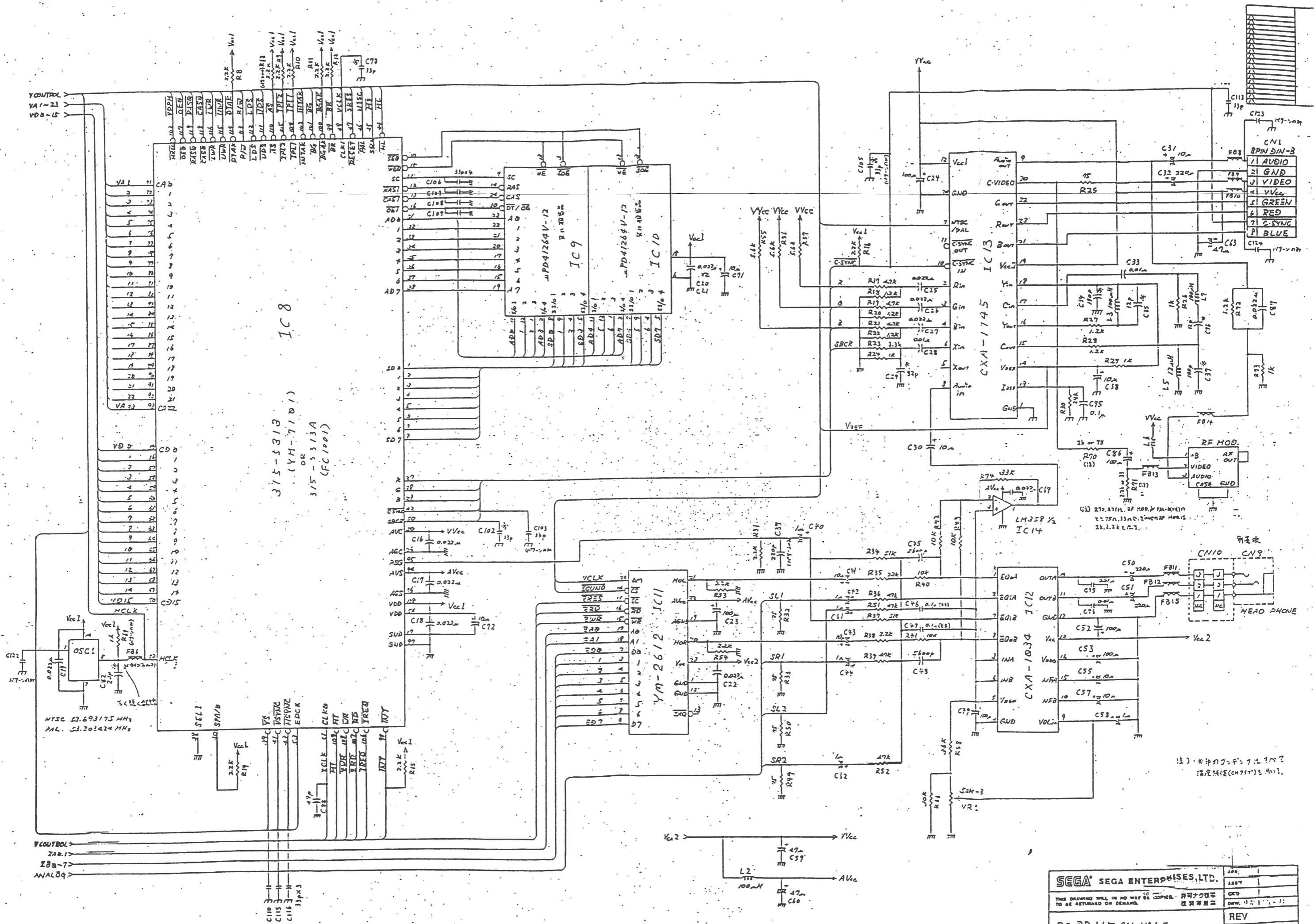


CN1 8PIN DIN-B

1	AUDIO
2	GND
3	VIDEO
4	V _{CC}
5	GREEN
6	RED
7	C-SYNC
8	BLUE

②) ②中へコネクタは、
型番(4150)を用い、
②の②に、②に②。

SEGA SEGA ENTERPRISES, LTD.		DATE: 1987.10.20
THIS DRAWING WILL BE NO LONGER BE COPIED TO BE RETURNED ON DEMAND.		REV
PC BOARD PAL V4 MAIN - 4 Version -		171-5872-20
DESCRIPTION		REV

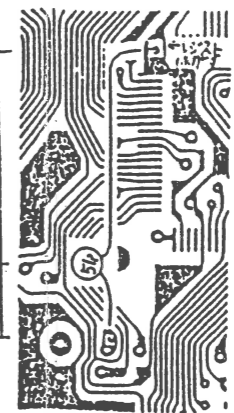
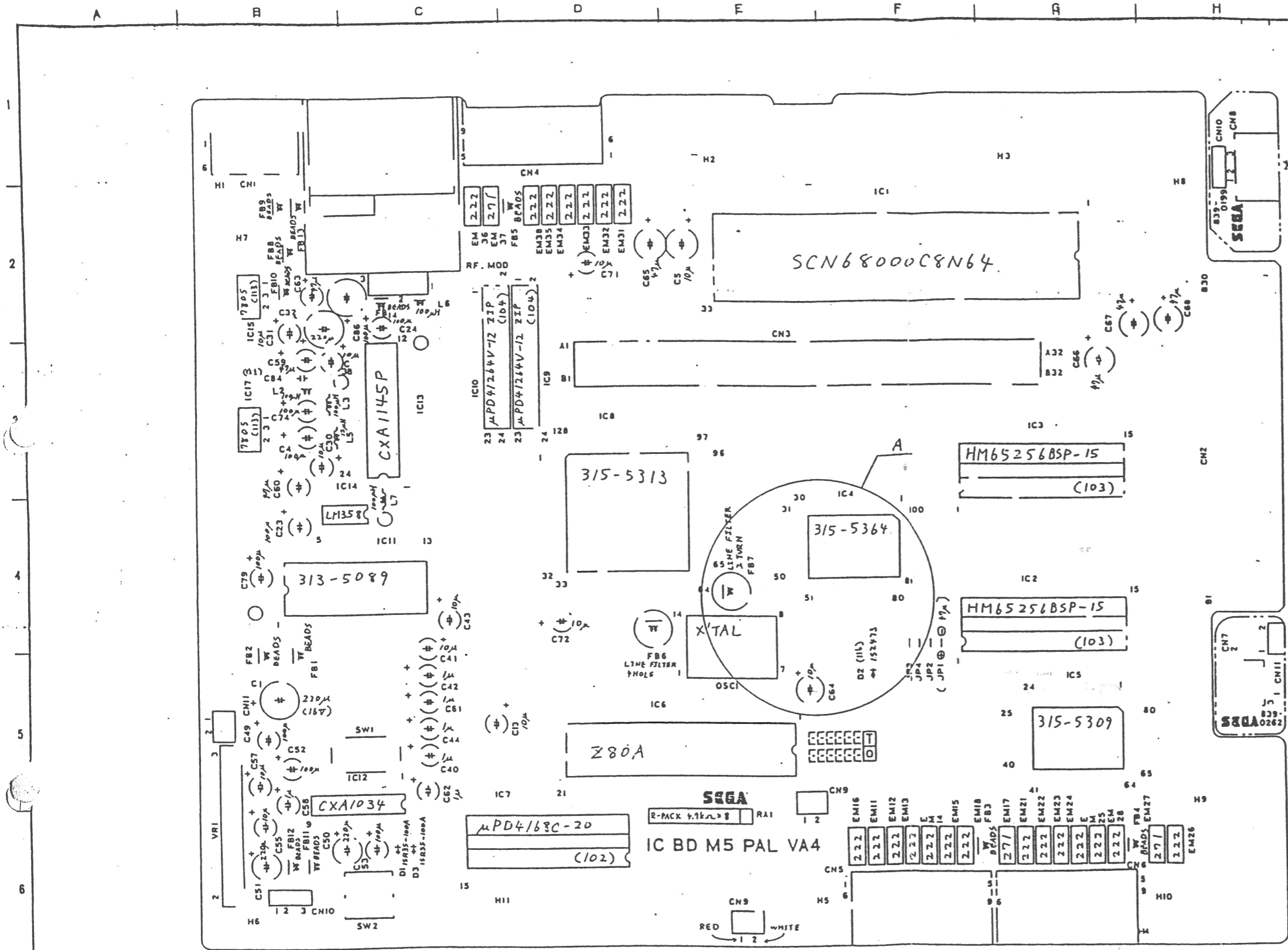


SEGA SEGA ENTERPRISES, LTD.	APP.
THIS DRAWING WILL IN NO WAY BE COPIED. 許可なく複製 TO BE RETURNED ON DEMAND. 複製等は返却	ASST.
PC BD M5 PAL VAI.5 - 610 version	REV
	171-5913-40

MEGA DRIVE

PAL-G (GERMANY)

MOUNT DIAGRAM



A部詳細図
(部品面より見た図)

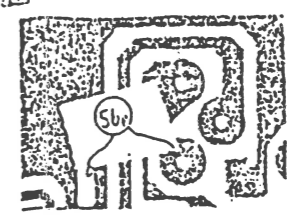
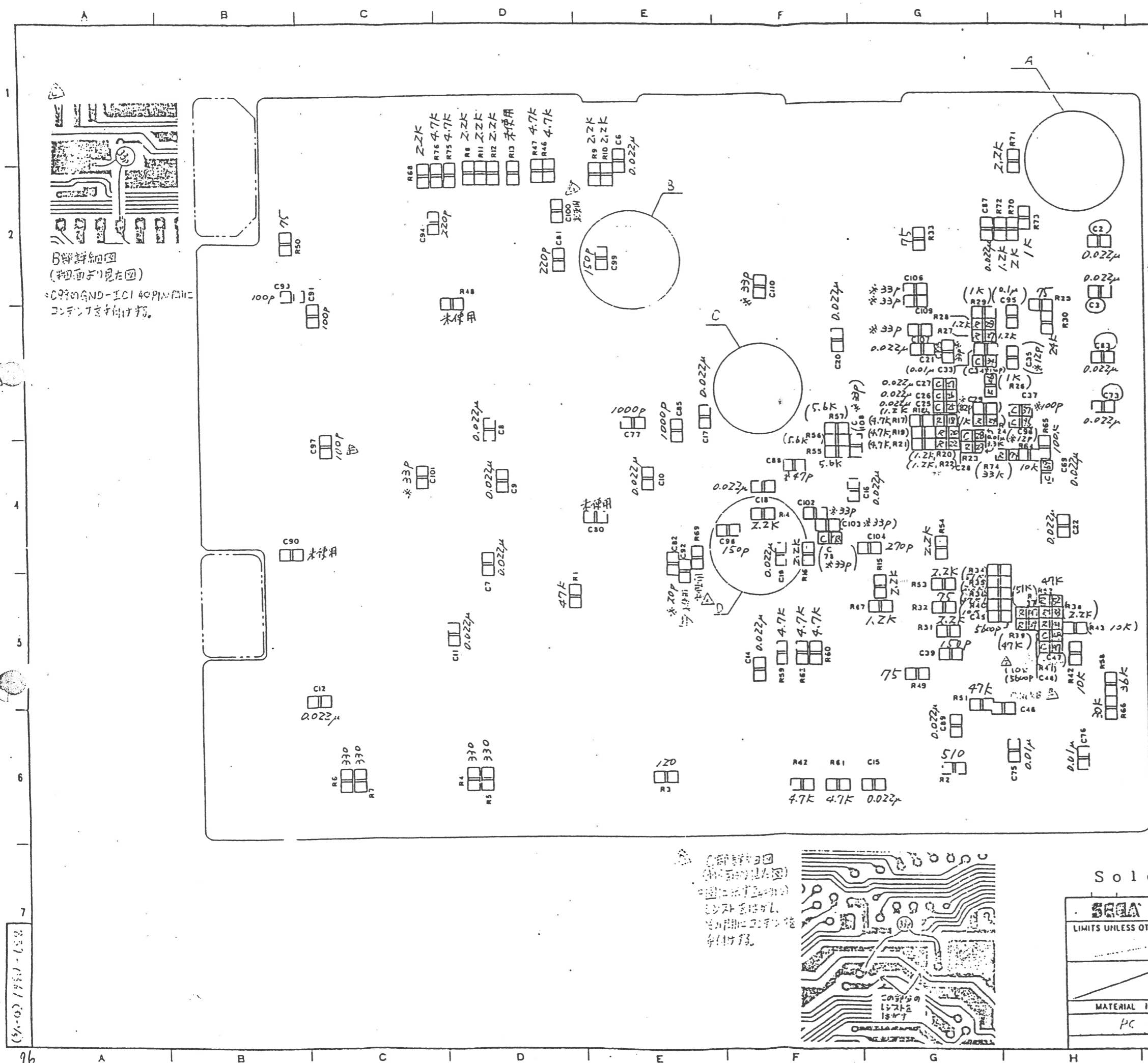
図面に示す部分のレジストをはがし、OSCの横のランド間にコンデンサを手付けする。

1. 839-0361 (0-V_{cc})において、O₁で図上であるコンデンサが、図上の場合、C84 (0.1μ) は、手付けする。
2. 部品品の取り付けに際しては、() 内に P/LIST の D/No. を示してあるので、P/LIST 参照のこと。
3. CN9 は、一番ピンに金いりリード線、2番ピンに白いリード線を取り付けする。
4. IC2, IC3 は 300mil タイプの IC の場合は 15ピン側に寄せて取り付けする。
5. IC7 は 300mil タイプの IC の場合は、15ピン側に寄せて取り付けする。
6. 基板外周の半田リベアとしてある部分 (P7GND) は、半田アセンブリ後、フラットに仕上げた後に付す。(半田に付く凹みがないこと) (マスキング処理を行う)

Comp Side

SEGA ENTERPRISES, LTD.		THIS DRAWING WILL BE 30 DAY M. C. M. 10 M. DELIVERED TO M. M. M.		許可なく複製 禁止	
LIMITS UNLESS OTHERWISE SPECIFIED 一般公差		3RD QUAT. PROJ. DRAWING 第三角法		図寸 単位	
SCALE 寸法		DIM. IN 単位		mm	
MATERIAL 材料		HEAT TREAT. 熱処理		FINISH 表面処理	
IC BD M5 VA4 PAL-9 MAIN		REMARK 特記事項		REV.	
DESCRIPTION 名称		PART NO. 部品番号		REV.	
837-7460 (0-2/8)		837-7460 (0-2/8)		REV.	

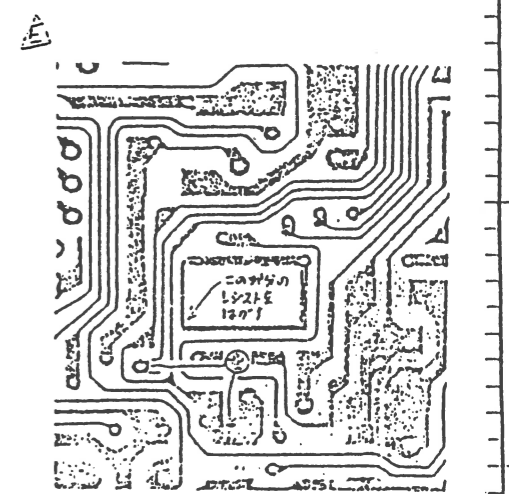
837-7460 (0-2/8)



A部詳細図
(詳細面より見た図)
*CMI 7番PIN-RF.MODのケ
ス間にコンデンサを付け付す。

注: シールドに当たる場合
には内側に折り曲げ
ること。

MACHINE 機名		SUB-ASS'Y 組立名	
		337-7460	
ALTERATIONS 改訂			
3H	ADD	150P	150P
1D			
1A			
2E			
3K	ADD	150P	150P
3C	ADD	150P	150P
3D	ADD	150P	150P
3E	ADD	150P	150P
3F	ADD	150P	150P
3G	ADD	150P	150P
3H	ADD	150P	150P
3I	ADD	150P	150P
3J	ADD	150P	150P
3K	ADD	150P	150P
3L	ADD	150P	150P
3M	ADD	150P	150P
3N	ADD	150P	150P
3O	ADD	150P	150P
3P	ADD	150P	150P
3Q	ADD	150P	150P
3R	ADD	150P	150P
3S	ADD	150P	150P
3T	ADD	150P	150P
3U	ADD	150P	150P
3V	ADD	150P	150P
3W	ADD	150P	150P
3X	ADD	150P	150P
3Y	ADD	150P	150P
3Z	ADD	150P	150P
4A	ADD	150P	150P
4B	ADD	150P	150P
4C	ADD	150P	150P
4D	ADD	150P	150P
4E	ADD	150P	150P
4F	ADD	150P	150P
4G	ADD	150P	150P
4H	ADD	150P	150P
4I	ADD	150P	150P
4J	ADD	150P	150P
4K	ADD	150P	150P
4L	ADD	150P	150P
4M	ADD	150P	150P
4N	ADD	150P	150P
4O	ADD	150P	150P
4P	ADD	150P	150P
4Q	ADD	150P	150P
4R	ADD	150P	150P
4S	ADD	150P	150P
4T	ADD	150P	150P
4U	ADD	150P	150P
4V	ADD	150P	150P
4W	ADD	150P	150P
4X	ADD	150P	150P
4Y	ADD	150P	150P
4Z	ADD	150P	150P
5A	ADD	150P	150P
5B	ADD	150P	150P
5C	ADD	150P	150P
5D	ADD	150P	150P
5E	ADD	150P	150P
5F	ADD	150P	150P
5G	ADD	150P	150P
5H	ADD	150P	150P
5I	ADD	150P	150P
5J	ADD	150P	150P
5K	ADD	150P	150P
5L	ADD	150P	150P
5M	ADD	150P	150P
5N	ADD	150P	150P
5O	ADD	150P	150P
5P	ADD	150P	150P
5Q	ADD	150P	150P
5R	ADD	150P	150P
5S	ADD	150P	150P
5T	ADD	150P	150P
5U	ADD	150P	150P
5V	ADD	150P	150P
5W	ADD	150P	150P
5X	ADD	150P	150P
5Y	ADD	150P	150P
5Z	ADD	150P	150P

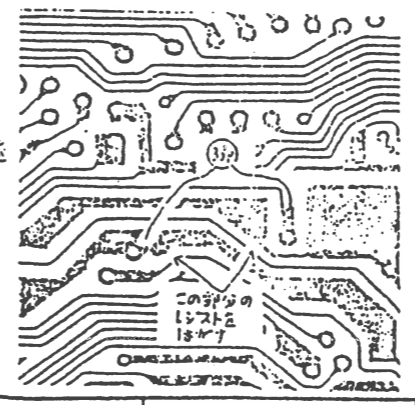


D部詳細図 (詳細面より見た図)
*図に示す部分のコンパイルは、C19のGND
とGNDにコンパイルして行う。

- 注1. 面内中56Pのコンパイルは、
標準仕様で41Pとする。
- 注2. 面内中56Pのコンパイルは、
標準仕様で41Pとする。

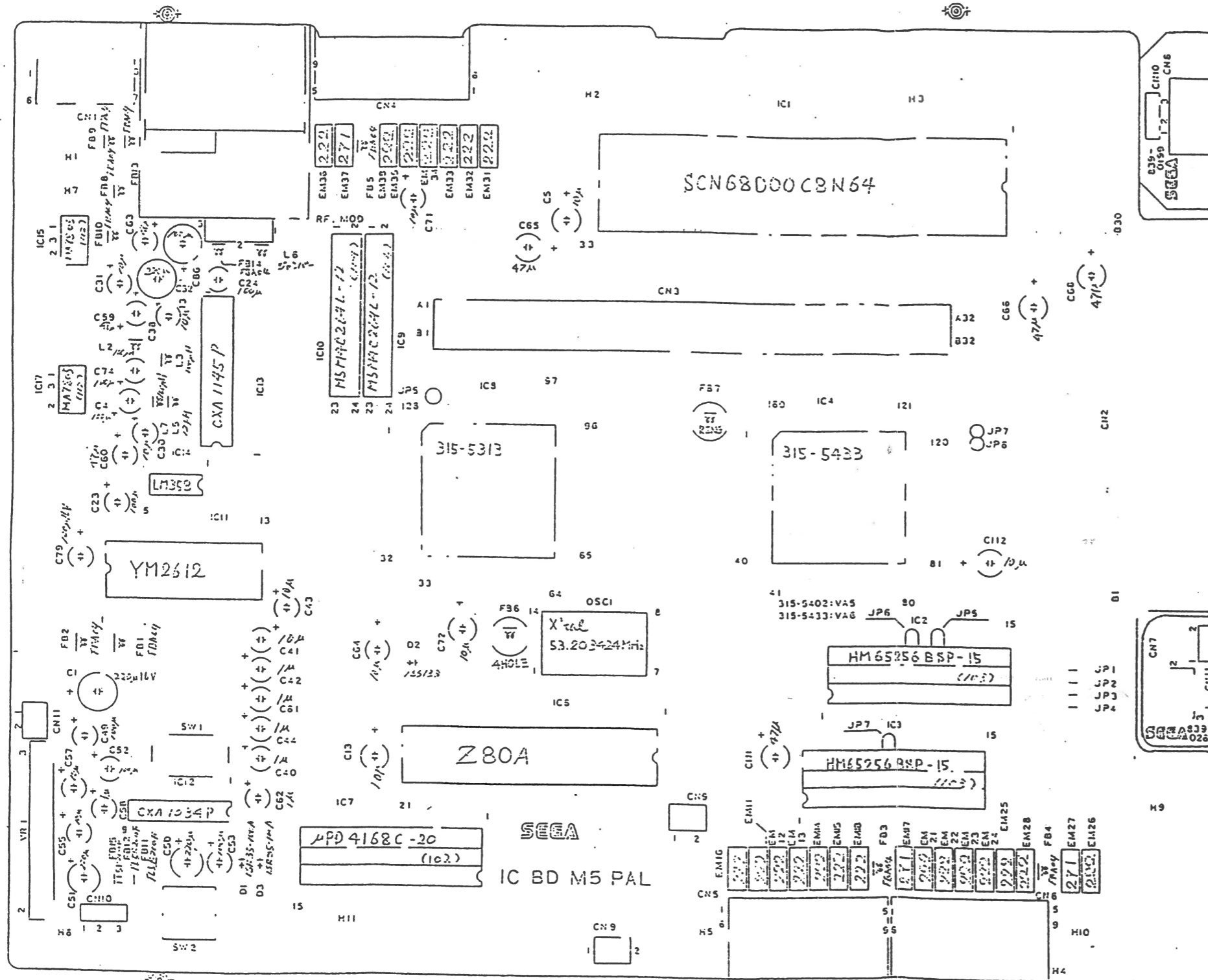
337-0311-150

この図は、
組立作業に
用います。
組立作業に
用います。



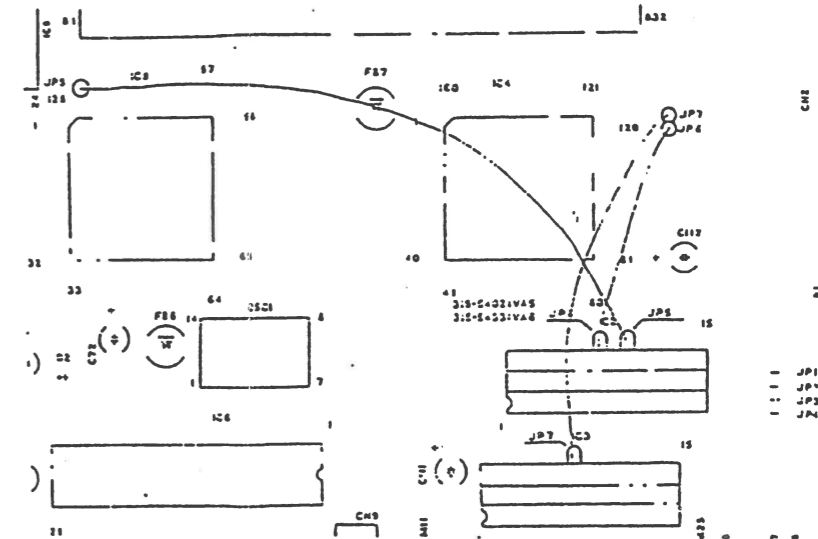
Sold Side

SEGA SEGA ENTERPRISES, LTD.		THE JAPANESE WILL BE 30 YET IN CASE.		THE JAPANESE WILL BE 30 YET IN CASE.	
LIMITS UNLESS OTHERWISE SPECIFIED 一般公差		300 GYAT. P.W. DRAWING 300 GYAT. P.W. DRAWING		300 GYAT. P.W. DRAWING 300 GYAT. P.W. DRAWING	
SCALE 1:1		DIM. IN MM		DIM. IN MM	
MATERIAL INH		HEAT TREAT. 無処理		FINISH 無処理	
PC ED MS LA4 PAL-G CHIP		REMARK 無処理		REV.	
DESCRIPTION 組立		PART NO. 0311-150		REV.	



ジャンパー紐の縫製方法

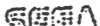
- (1) IC2.3が600silタイプの場合
A側の柱にジャンパー線を接続する。
その際、IC2.3に接続されるジャンパー線はICの足に半田付けしなければならぬので、半田ブリッジの内容に注意すること。
また、JP6.7の2本のジャンパー線は、半田回路からの接続も可能
です。
- (2) IC2.3が300silタイプの場合
A側の柱にジャンパー線を接続する。
尚、IC2.3に接続されるジャンパー線は、ICの外側の部品穴が未
使用になるので、そこに半田付けす
ること。

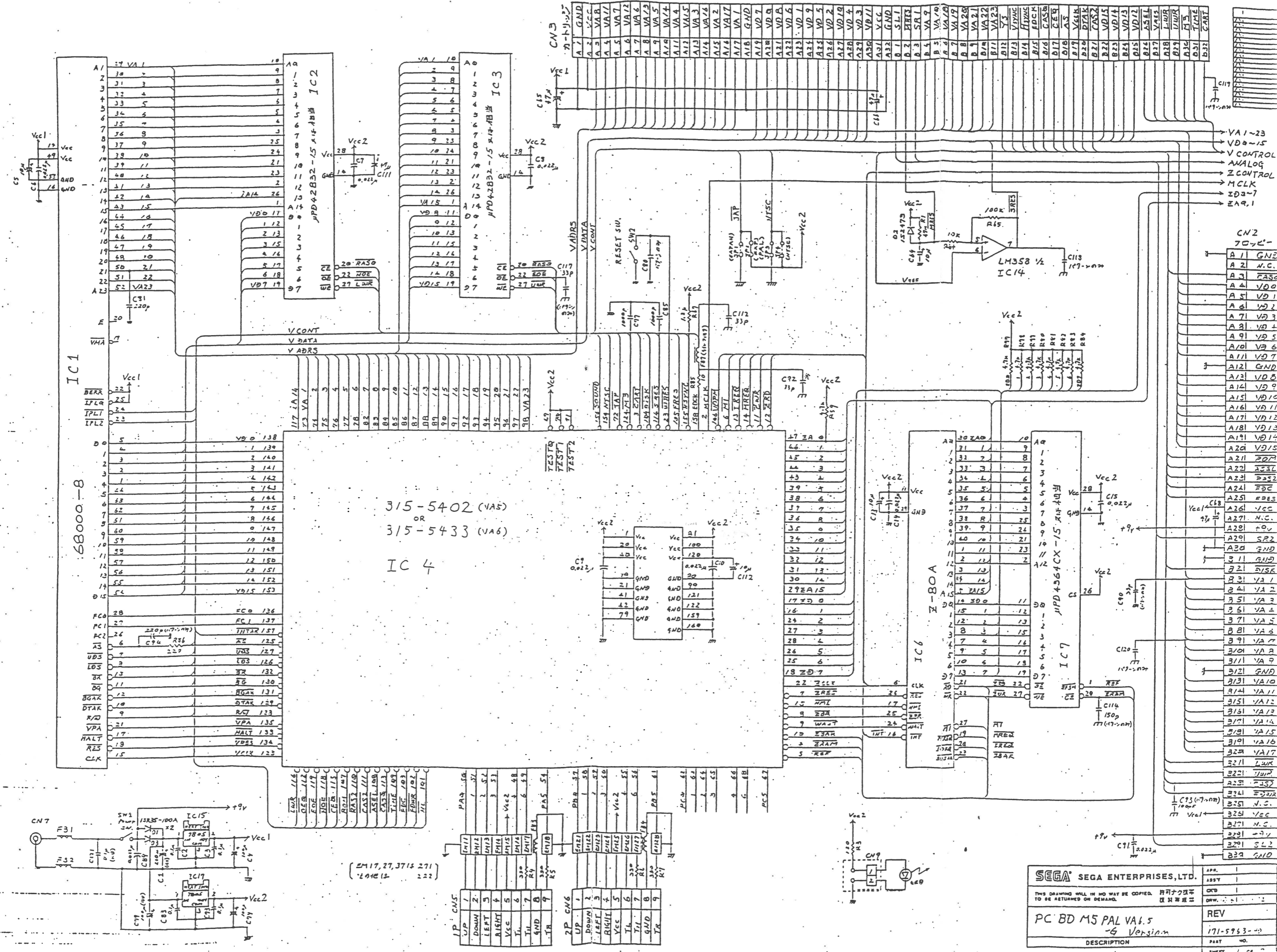


△図・ジャンパー熱接線図
(節品面張よりジャンパーする)

注：①指定品のあるものに関しては、() 内に P/LIST
TのD No. を示してあるので、P/LISTを
照会のこと。
②C D9は、一階ピンに赤いリード線、二階ピンに白
いリード線を取り付けること。
③IC2、IC3が300mI1のタイプの場合、一
階ピン側に寄せて取り付けること。
④IC7が300mI1タイプの場合、一五階ピン側
に寄せて取り付けること。
⑤添付外装の半田リベラ部（ベクGND）は、基板ア
センブリ後、フラットにしようとする事。
（半田に依る凹凸が無いこと、マスキング処理を行
なうこと。）

C o m p S i d e

		SEGA ENTERPRISES, LTD.		THIS DRAWING WILL BE NO WAY BE COPIED. IT BE RETURNED ON DEMAND.		150ナク板子 成数等成数	
LIMITS UNLESS OTHERWISE SPECIFIED — 単位: mm				ISO QUAT. PROJ. DRAWING (1:1) (1:1) (1:1) (1:1)			
				SCALE 1/2		全 国 小	
				DIM. IN mm		1/2	
						1/2	
MATERIAL 100				HEAT TREAT. 100		FINISH 100	
IC BD M5 VAG, PAL-G MAIN				837-2169 (2-1/2)			
DESCRIPTION 100				PART NO. 100-0000			

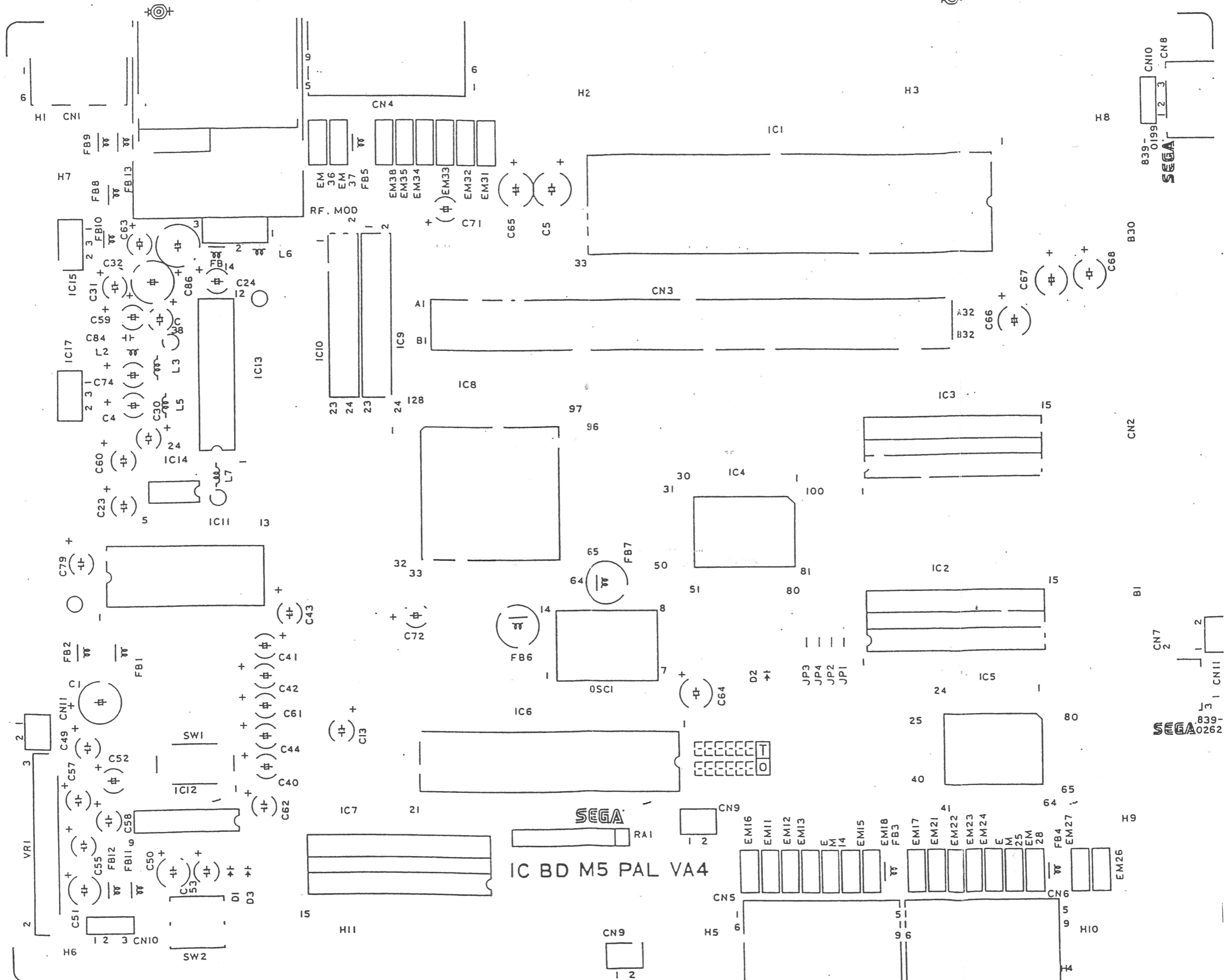


SEGA	SEGA ENTERPRISES, LTD.	APP.	1
THIS DRAWING WILL IN NO WAY BE COPIED. 許可なく複製 TO BE RETURNED ON DEMAND. 図面返却		ASSY	1
REV		CND	1
PC BD M5 PAL V1.5 - 6 Version		REV	171-5963-00
DESCRIPTION		PART	NO.
SHEET		1 of 2	

MEGA DRIVE

PAL-G (GERMANY)

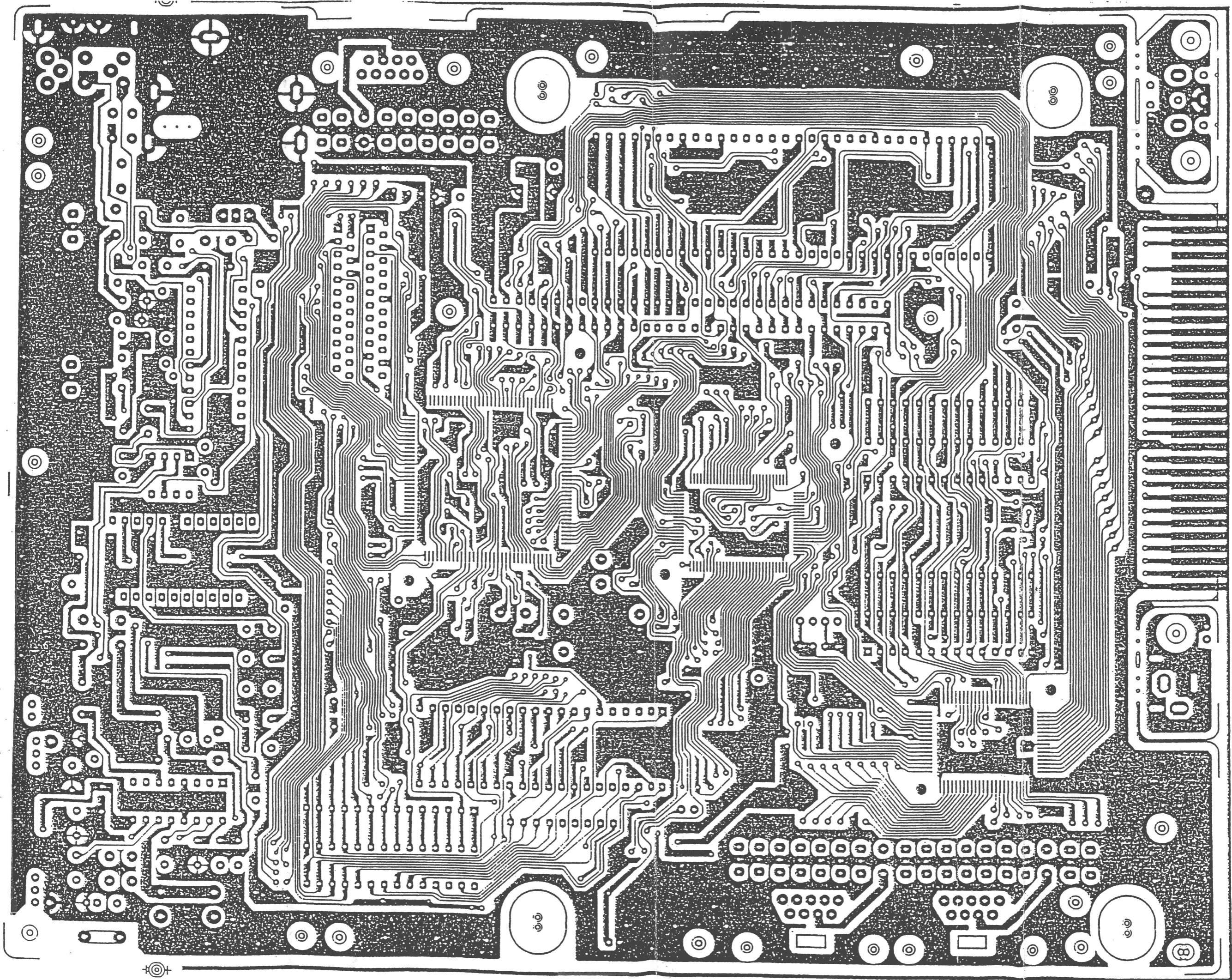
PCB DESIGN SPEC.

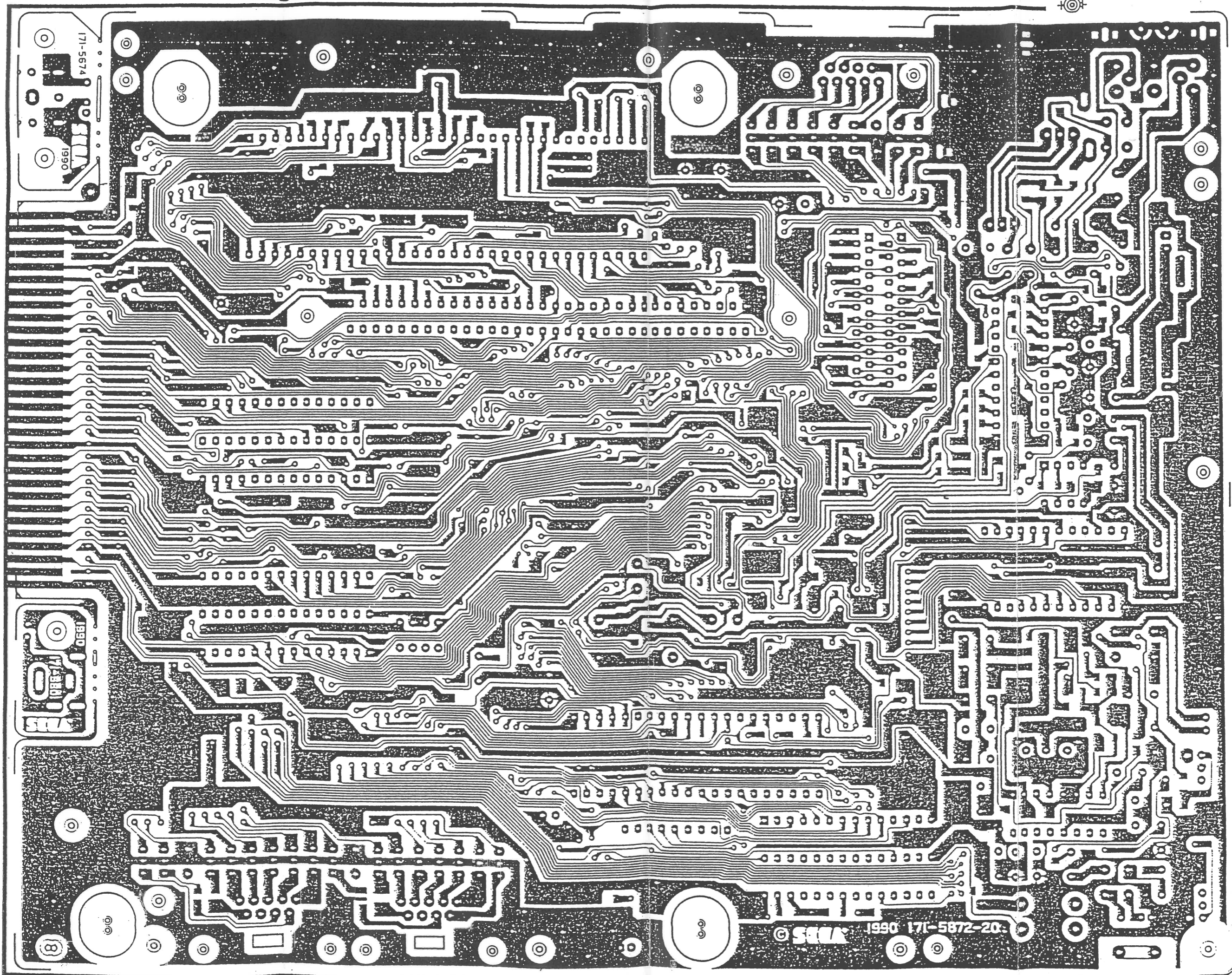


PC BD M5 PAL VA4 MAIN BD Comp Side Mark

部品面

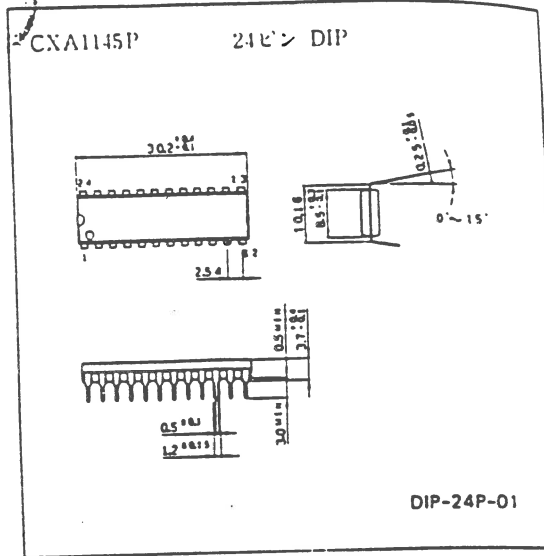




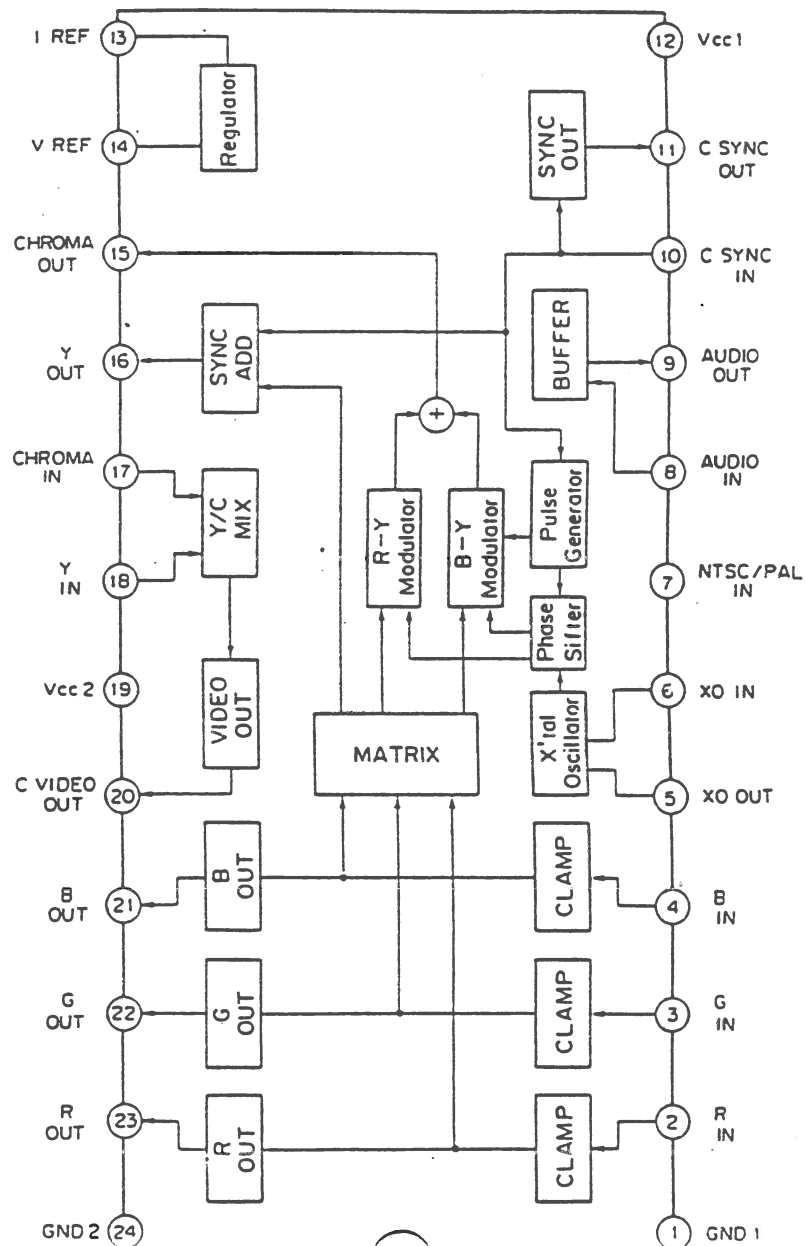


MAIN BOARD IC13 1/3 外形寸法図
IC CXA1145P

単位: mm



ブロック図及び端子配列図



端子説明

端子番号	端子記号	外部回路	端子説明
1	GND1		RGB出力、コンポジットビデオ出力回路以外の回路のGND端子です。GND2とは出来るだけ低いインピーダンスで接続して下さい。
2 3 4	R IN G IN B IN		アナログRGB信号の入力端子です。 100% = 1Vp-pで入力して下さい。 クランプの調整を少なくするため、出来るだけ低いインピーダンスで入力する必要があります。
5	XO OUT		X'tal OSC用の端子です。 内部発振で使用する場合は水晶発振子を接続します。 また、外部発振で使用する場合には、カップリングコンデンサを通して6番端子 XO IN に入力して下さい。 サブキャリアの入力レベルは400mVp-p ~ 1,000mVp-pで入力して下さい。 外部発振で使用する場合には十分に差込みの小さいサイン波を入力して下さい。 近隣の多い場合にはクロマ信号の位相特性が悪化する恐れがあります。
6	XO IN		
7	NTSC/PAL IN		NTSC、PALモードの切り換え端子です。 Vcc NTSC GND PAL

端子番号	端子記号	外部回路	端子説明
8	AUDIO IN		オーディオバッファアンプ回路の入力端子です。 入力インピーダンスは約25kΩです。
9	AUDIO OUT		オーディオバッファアンプ回路の出力端子です。
10	C SYNC IN		コンポジットシンク信号の入力端子です。 TTLレベルで入力して下さい。 L (≤0.8V) 時: SYNC H (≥2.0V)
11	C SYNC OUT		コンポジットシンク信号の出力端子です。 75Ωの負荷を接続駆動する事が出来ます。
12	Vcc1		RGB出力回路、コンポジットビデオ出力回路以外の回路の電源端子です。

端子番号	端子記号	等価回路	端子説明
13	I REF		内部の基準電流を決める端子です。27Ωを挿してGNDに接続します。
14	V REF		内部の基準電圧端子です。 10 μ F程度のコンデンサで接続して下さい。
15	C OUT		クロマ信号出力端子です。 17番端子 (C IN) との間にはBPF (バンドパスフィルタ) を接続します。
16	Y OUT		Y信号出力端子です。 18番端子 (Y IN) との間にはDL (ダイレイライン) を接続します。
17	C IN		BPF (バンドパスフィルタ) で高周波を除いたクロマ信号を入力する端子です。


端子番号	端子記号	等価回路	端子説明
18	Y IN		DL (ダイレイライン) で遅延されたY信号を入力する端子です。
19	Vcc2		RGB出力回路、コンポジットビデオ出力回路の電源端子です。 大電流が流れるため十分大きなコンデンサでデカップリングして下さい。
20	C VIDEO OUT		Y, C MIX回路の出力端子です。コンポジットビデオ信号が出力されます。75Ωの負荷を直接駆動することが出来ます。
21 22 23	B OUT G OUT R OUT		アナログRGB信号の出力端子です。 75Ωの負荷を直接駆動することが出来ます。
24	GND2		RGB出力回路、コンポジット出力回路のGND端子です。 GND1とは出来るだけ低いインピーダンスで接続して下さい。

MEGA DRIVE

PAL-G (GERMANY)

PARTS LIST OF PCB


D. NO.	DESCRIPTION	PART. NO.	NOTE
	PC BD M5 VA4 PAL-G CHIP	839-0361	
	HEAT SINK M5-02	530-5038-02	
IC 1	IC SCN68000C8N64	315-0328	
IC 2	IC HM65256BSP-15 (HITACHI)	315-0371-15	ONE OF THESE 300mil 917*15.15 2pin 例に準じ
	IC μ PD42832C-15 (NEC)	315-0370-15	
	IC TC51832-12 (TOSHIBA)	315-0471	
IC 3	IC HM65256BSP-15 (HITACHI)	315-0371-15	ONE OF THESE 300mil 917*15.15 2pin 例に準じ
	IC μ PD42832C-15 (NEC)	315-0370-15	
	IC TC51832-12 (TOSHIBA)	315-0471	
IC 4	IC CUSTOM CHIP YM6045C (YAMAHA)	315-5364	
IC 5	IC CUSTOM CHIP YM6046 (YAMAHA)	315-5309	
IC 6	IC Z80A (ZILOG/NEC)	315-0041	
IC 7	IC μ PD4168C-20 (NEC)	315-0298	
	IC μ PD4168C-15 (NEC)	315-0298-15	
	IC μ PD4168C-15-SG (NEC)	315-0298-15S	
	IC μ PD4364C-15 (NEC)	315-0441-15	
	IC μ PD4364CX (NEC)	315-0465	ONE OF THESE
	IC MB8464A-15L (FUJITSU)	315-0330	300mil 917*15.15 2pin 例に準じ
	IC TMM2064-15 (TOSHIBA)	315-0335	
	IC TMM2063-12 (TOSHIBA)	315-0374	
	IC HM6264L-120 (SANKO)	315-0530	
IC 8	IC CUSTOM CHIP YM7101 (YAMAHA)	315-5313	ONE OF THESE
	IC CUSTOM CHIP FU1601 (YAMAHA)	315-5313A	

ALTERATION				 SEGA ENTERPRISES, LTD.	APR. 22 1980
△	ADD	△			ASS'Y
				THIS DRAWING WILL IN NO WAY BE COPIED. TO BE RETURNED ON DEMAND.	CK'D
				DRW. 国本 1/11-80	
				IC-BD M5 VA4 PAL-G MAIN	REV
				DESCRIPTION	837-7460
				PART NO.	
				SHEET 1 OF 9	


D. NO.	DESCRIPTION	PART. NO.	NOTE
IC 9	IC M5M4C264L-12 (MITSUBISHI)	315-0515	
	IC M5M4C264L-15 (MITSUBISHI)	315-0515-15	
	IC μ PD41264V-12 ZIP (NEC)	315-0453	ONE OF THESE (ZIP TYPE)
	IC MB81461-12 ZIP (FUJITSU)	315-0423	
	IC HM53461ZP-12 (HITACHI)	315-0481	
	IC TMS4461-12SDL (T.I)	315-0525	
IC 10	IC M5M4C264L-12 (MITSUBISHI)	315-0515	
	IC M5M4C264L-15 (MITSUBISHI)	315-0515-15	
	IC μ PD41264V-12 ZIP (NEC)	315-0453	ONE OF THESE (ZIP TYPE)
	IC MB81461-12 ZIP (FUJITSU)	315-0423	
	IC HM53461ZP-12 (HITACHI)	315-0481	
	IC TMS4461-12SDL (T.I)	315-0525	
IC 11	IC YM2612 (YAMAHA)	313-5089	
IC 12	IC CXA1034 (SONY)	313-5079	ONE OF THESE
	IC AN7108 (MATUSITA)	313-5144	
IC 13	IC CXA1145P (SONY)	313-5067	
IC 14	IC LM358	313-5020	
IC 15	IC MA7805UC (NEC)	313-0092	ONE OF THESE
	IC MC7805CT (MOTOROLA)	313-5092	
IC 17	IC MA7805UC (NEC)	313-0092	ONE OF THESE
	IC MC7805CT (MOTOROLA)	313-5092	
OSC 1	X'TAL 53.203424MHz \pm 20ppm TXC-2	230-5058	(T.Q.C.)

ALTERATION				SEGA SEGA ENTERPRISES, LTD.		APR. 小丸 7/17 '90
				THIS DRAWING WILL IN NO WAY BE COPIED. TO BE RETURNED ON DEMAND.		ASS'Y
						CK'D
						DRW. 図本 7/14-'90
						REV
				IC-BD M5 VA4 PAL-G MAIN		837-7460
				DESCRIPTION		PART NO.
						SHEET 2 OF 9

D. NO.	DESCRIPTION	PART. NO.	NOTE
R 1	RES CHIP 47k Ω 1/8W \pm 5%	476-0473-J-08	
R 2	RES CHIP 510 Ω 1/8W \pm 5%	476-0511-J-08	
R 3	RES CHIP 120 Ω 1/8W \pm 5%	476-0121-J-08	
R 4	RES CHIP 330 Ω 1/8W \pm 5%	476-0331-J-08	
R 5	RES CHIP 330 Ω 1/8W \pm 5%	476-0331-J-08	
R 6	RES CHIP 330 Ω 1/8W \pm 5%	476-0331-J-08	
R 7	RES CHIP 330 Ω 1/8W \pm 5%	476-0331-J-08	
R 8	RES CHIP 2.2k Ω 1/8W \pm 5%	476-0222-J-08	
R 9	RES CHIP 2.2k Ω 1/8W \pm 5%	476-0222-J-08	
R 10	RES CHIP 2.2k Ω 1/8W \pm 5%	476-0222-J-08	
R 11	RES CHIP 2.2k Ω 1/8W \pm 5%	476-0222-J-08	
R 12	RES CHIP 2.2k Ω 1/8W \pm 5%	476-0222-J-08	
R 13	RES CHIP 1.2k Ω 1/8W \pm 5%	476-0122-J-08	NO USE
R 14	RES CHIP 2.2k Ω 1/8W \pm 5%	476-0222-J-08	
R 15	RES CHIP 2.2k Ω 1/8W \pm 5%	476-0222-J-08	
R 16	RES CHIP 2.2k Ω 1/8W \pm 5%	476-0222-J-08	
R 17	RES CHIP 4.7k Ω 1/8W \pm 5%	476-0472-J-08	
R 18	RES CHIP 1.2k Ω 1/8W \pm 5%	476-0122-J-08	
R 19	RES CHIP 4.7k Ω 1/8W \pm 5%	476-0472-J-08	
R 20	RES CHIP 1.2k Ω 1/8W \pm 5%	476-0122-J-08	
R 21	RES CHIP 4.7k Ω 1/8W \pm 5%	476-0472-J-08	
R 22	RES CHIP 1.2k Ω 1/8W \pm 5%	476-0122-J-08	
R 23	RES CHIP 3.3k Ω 1/8W \pm 5%	476-0332-J-08	
R 24	RES CHIP 1k Ω 1/8W \pm 5%	476-0102-J-08	
R 25	RES CHIP 75 Ω 1/8W \pm 5%	476-0750-J-08	
R 26	RES CHIP 1k Ω 1/8W \pm 5%	476-0102-J-08	

ALTERATION			 SEGA SEGA ENTERPRISES, LTD. THIS DRAWING WILL IN NO WAY BE COPIED. TO BE RETURNED ON DEMAND.	APR. 14 1990
				ASS'Y
				CK'D
				DRW. 1/1 1/4
				9/17 '90
			REV	
			839-0361	
			PART NO.	
			SHEET 4 OF 8	


D. NO.	DESCRIPTION	PART. NO.	NOTE
R 27	RES CHIP 1.2k Ω 1/8W \pm 5%	476-0122-J-08	
R 28	RES CHIP 1.2k Ω 1/8W \pm 5%	476-0122-J-08	
R 29	RES CHIP 1k Ω 1/8W \pm 5%	476-0102-J-08	
R 30	RES CHIP 24k Ω 1/8W \pm 5%	476-0243-J-08	
R 31	RES CHIP 2.2k Ω 1/8W \pm 5%	476-0222-J-08	
R 32	RES CHIP 75 Ω 1/8W \pm 5%	476-0750-J-08	
R 33	RES CHIP 75 Ω 1/8W \pm 5%	476-0750-J-08	
R 34	RES CHIP 51k Ω 1/8W \pm 5%	476-0513-J-08	
R 35	RES CHIP 2.2k Ω 1/8W \pm 5%	476-0222-J-08	
R 36	RES CHIP 47k Ω 1/8W \pm 5%	476-0473-J-08	
R 37	RES CHIP 51k Ω 1/8W \pm 5%	476-0513-J-08	
R 38	RES CHIP 2.2k Ω 1/8W \pm 5%	476-0222-J-08	
R 39	RES CHIP 47k Ω 1/8W \pm 5%	476-0473-J-08	
R 40	RES CHIP 10k Ω 1/8W \pm 5%	476-0103-J-08	
R 41	RES CHIP 10k Ω 1/8W \pm 5%	476-0103-J-08	
R 42	RES CHIP 10k Ω 1/8W \pm 5%	476-0103-J-08	
R 43	RES CHIP 10k Ω 1/8W \pm 5%	476-0103-J-08	
R 46	RES CHIP 4.7k Ω 1/8W \pm 5%	476-0472-J-08	
R 47	RES CHIP 4.7k Ω 1/8W \pm 5%	476-0472-J-08	
R 48	RES CHIP 4.7k Ω 1/8W \pm 5%	476-0472-J-08	NO USE
R 49	RES CHIP 75 Ω 1/8W \pm 5%	476-0750-J-08	
R 50	RES CHIP 75 Ω 1/8W \pm 5%	476-0750-J-08	
R 51	RES CHIP 47k Ω 1/8W \pm 5%	476-0473-J-08	
R 52	RES CHIP 47k Ω 1/8W \pm 5%	476-0473-J-08	
R 53	RES CHIP 2.2k Ω 1/8W \pm 5%	476-0222-J-08	
R 54	RES CHIP 2.2k Ω 1/8W \pm 5%	476-0222-J-08	

ALTERATION		 SEGA SEGA ENTERPRISES, LTD. THIS DRAWING WILL IN NO WAY BE COPIED. TO BE RETURNED ON DEMAND.	APR. 14 1990
			ASS'Y
			CK'D
			DRW. 図本 1/1-90
			REV
		PC-BD M5 VA4 PAL-G CHIP	839-0361
		DESCRIPTION	PART NO.
			SHEET 5 OF 8

D. NO.	DESCRIPTION	PART. NO.	NOTE
C 27	CAP CER CHIP 0.022 μ F 25V ZF	151-0227	
C 28	CAP CER CHIP 0.01 μ F 16V KB	151-0228	
C 29	CAP CER CHIP 82pF 50V CH	151-5019	
C 33	CAP CER CHIP 0.01 μ F 16V KB	151-0228	
C 34	CAP CER CHIP 180pF 50V CH	151-0234	
C 35	CAP CER CHIP 12pF 50V CH	151-5018	
C 37	CAP CER CHIP 100pF 50V CH	151-5020	
C 39	CAP CER CHIP 150pF 50V SL	151-5021	
C 45	CAP CER CHIP 5600pF 16V KB	151-5016	
C 46	CAP CER CHIP 0.1 μ F 25V KB	151-5015	
C 47	CAP CER CHIP 0.1 μ F 25V KB	151-5015	
C 48	CAP CER CHIP 5600pF 16V KB	151-5016	
C 69	CAP CER CHIP 0.022 μ F 25V ZF	151-0227	
C 73	CAP CER CHIP 0.022 μ F 25V ZF	151-0227	(マルチチップの場合) ONE OF THESE (シングルチップの場合)
	CAP CER CHIP 0.1 μ F 25V ZF	151-0245	
C 75	CAP CER CHIP 0.01 μ F 16V KB	151-0228	
C 76	CAP CER CHIP 0.01 μ F 16V KB	151-0228	
C 77	CAP CER CHIP 1000pF 50V KB	151-0232	
C 78	CAP CER CHIP 33pF 50V CH	151-5025	
C 80			
C 81	CAP CER CHIP 220pF 50V KB	151-0230	
C 82	CAP CER CHIP 20pF 50V CH	151-5022	
C 83	CAP CER CHIP 0.022 μ F 25V ZF	151-0227	(マルチチップの場合) ONE OF THESE (シングルチップの場合)
	CAP CER CHIP 0.1 μ F 25V ZF	151-0245	
C 85	CAP CER CHIP 1000pF 50V KB	151-0232	
C 87	CAP CER CHIP 0.022 μ F 25V ZF	151-0227	

ALTERATION				SEGA SEGA ENTERPRISES, LTD. THIS DRAWING WILL IN NO WAY BE COPIED. TO BE RETURNED ON DEMAND. PC-BD M5 VA4 PAL-G CHIP DESCRIPTION	APR. 小丸 9/17 '90
					ASS'Y
					CK'D
					DRW. 岡本 9/14 '90
				REV	
				839-0361	
				PART NO.	
				SHEET 2 OF 6	


D. NO.	DESCRIPTION	PART. NO.	NOTE
C 88	CAP CER CHIP 47pF 50V CH	151-5026	
C 89	CAP CER CHIP 0.022μF 25V ZF	151-0227	
C 90	CAP CER CHIP 33pF 50V CH	151-5025	NO USE
C 91	CAP CER CHIP 100pF 50V SL	151-0229	
C 92	CAP CER CHIP 51pF 50V CH	151-5023	NO USE
C 93	CAP CER CHIP 100pF 50V SL	151-0229	
C 94	CAP CER CHIP 220pF 50V KB	151-0230	
C 95	CAP CER CHIP 0.1μF 25V ZF	151-0245	
C 96	CAP CER CHIP 12pF 50V CH	151-5018	
C 97	CAP CER CHIP 100pF 50V SL	151-0229	
C 98	CAP CER CHIP 150pF 50V SL	151-5021	
C 99	CAP CER CHIP 150pF 50V SL	151-5021	
C100	CAP CER CHIP 33pF 50V CH	151-5025	NO USE
C101	CAP CER CHIP 33pF 50V CH	151-5025	
C102	CAP CER CHIP 33pF 50V CH	151-5025	
C103	CAP CER CHIP 33pF 50V CH	151-5025	
C104	CAP CER CHIP 270pF 50V KB	151-5024	
C105	CAP CER CHIP 33pF 50V CH	151-5025	
C106	CAP CER CHIP 33pF 50V CH	151-5025	
C107	CAP CER CHIP 33pF 50V CH	151-5025	
C108	CAP CER CHIP 33pF 50V CH	151-5025	
C109	CAP CER CHIP 33pF 50V CH	151-5025	
C110	CAP CER CHIP 33pF 50V CH	151-5025	

ALTERATION				 SEGA SEGA ENTERPRISES, LTD. THIS DRAWING WILL IN NO WAY BE COPIED. TO BE RETURNED ON DEMAND.	APR. 小丸 9/17'90	
					ASS'Y	
					CK'D	
					DRW. 小丸 9/14-'90	
					REV	
				PC-BD M5 VA4 PAL-G CHIP	839-0361	
				DESCRIPTION	PART NO.	
				SHEET 3 OF 8		


D. NO.	DESCRIPTION	PART. NO.	NOTE
	PC BD M5 PAL VA4 MAIN	171-5872-20	
C 2	CAP CER CHIP 0.022 μ F 25V ZF	151-0227	(マルチチップの場合) ONE OF THESE
	CAP CER CHIP 0.1 μ F 25V ZF	151-0245	(マルチチップの場合)
C 3	CAP CER CHIP 0.022 μ F 25V ZF	151-0227	(マルチチップの場合) ONE OF THESE
	CAP CER CHIP 0.1 μ F 25V ZF	151-0245	(マルチチップの場合)
C 6	CAP CER CHIP 0.022 μ F 25V ZF	151-0227	
C 7	CAP CER CHIP 0.022 μ F 25V ZF	151-0227	
C 8	CAP CER CHIP 0.022 μ F 25V ZF	151-0227	
C 9	CAP CER CHIP 0.022 μ F 25V ZF	151-0227	
C 10	CAP CER CHIP 0.022 μ F 25V ZF	151-0227	
C 11	CAP CER CHIP 0.022 μ F 25V ZF	151-0227	
C 12	CAP CER CHIP 0.022 μ F 25V ZF	151-0227	
C 14	CAP CER CHIP 0.022 μ F 25V ZF	151-0227	
C 15	CAP CER CHIP 0.022 μ F 25V ZF	151-0227	
C 16	CAP CER CHIP 0.022 μ F 25V ZF	151-0227	
C 17	CAP CER CHIP 0.022 μ F 25V ZF	151-0227	
C 18	CAP CER CHIP 0.022 μ F 25V ZF	151-0227	
C 19	CAP CER CHIP 0.022 μ F 25V ZF	151-0227	
C 20	CAP CER CHIP 0.022 μ F 25V ZF	151-0227	
C 21	CAP CER CHIP 0.022 μ F 25V ZF	151-0227	
C 22	CAP CER CHIP 0.022 μ F 25V ZF	151-0227	
C 25	CAP CER CHIP 0.022 μ F 25V ZF	151-0227	
C 26	CAP CER CHIP 0.022 μ F 25V ZF	151-0227	

ALTERATION				SEGA SEGA ENTERPRISES, LTD.		APR. 1990
				THIS DRAWING WILL IN NO WAY BE COPIED. TO BE RETURNED ON DEMAND.		ASS'Y
				PC BD M5 VA4 PAL-G CHIP		CK'D
						DRW. 1990
				DESCRIPTION		REV
						839-0361
						PART NO.
						SHEET 1 OF 6


D. NO.	DESCRIPTION	PART. NO.	NOTE
SW 2	TACTIL PUSH SW (ALPS)	510-5019	ONE OF THESE
	TACT SWITCH SKEVAA (ALPS)	509-5207	
CN 1	DIN CONN 8P B-TYPE (UNION)	212-5106	
CN 3	EDGE CONNECTOR 64P (MITSUMI)	209-5026	
CN 4	D-9P ANGLE TYPE (UNION)	209-5027	
CN 5	D-SUB 9P ANGLE TYPE (UNION)	209-5017-01	
CN 6	D-SUB 9P ANGLE TYPE (UNION)	209-5017-01	
CN 9	LED SOCKET/CABLE (UNION)	600-5110-02	ONE OF THESE 1番ピンは、2番ピンに接続される。
	LED SOCKET WITH CNN L=110mm (W.P.)	600-5820	
RA 1	R-PACK 8x472 1/8W W/COMMON	477-0106-472	
RF MOD.	RF MODULATER YAA21-0496 (JALCO)	200-5086-02	
	SUMI TUBE F L=15mm	310-5029-15	C72の7-Fに接続
	SCREW LOCK (10 pos.)	090-0012	
	GRS THRM 200GR/TUBE (2 pos.)	601-0076	JC15, 17の HEAT SINK内に 2ヶ所
	EYLET 3.5x7 (2 pos.)	048-0001	ONE OF THESE CN3 固定用
	EYLET #6x3.5x8 (2 pos.)	048-0002	
	TAP SCR PH 3x8 (4 pos.)	012-0308	CN5, 6 固定用
	M SCR PH 3x8 (2 pos.)	000-0308	CN4 固定用
	DELTITE SCR PH M3x6 (4 pos.)	029-0227	JC15, JC17, HEAT SINK 固定用

ALTERATION				 SEGA ENTERPRISES, LTD. THIS DRAWING WILL IN NO WAY BE COPIED. TO BE RETURNED ON DEMAND.	APR. 小丸 9/17 '90
					ASS'Y
					CK'D
					DRW. 岡本 9/4 '90
					REV
				IC BD M5 VA4 PAL-G MAIN	837-7460
				DESCRIPTION	PART NO.
					SHEET 9 OF 9


D. NO.	DESCRIPTION	PART. NO.	NOTE
EM 26	EMI FILTER STX222MB (TAIYO U.)	271-0007	
EM 27	EMI FILTER STB271KB (TAIYO U.)	271-0006	
EM 28	EMI FILTER STX222MB (TAIYO U.)	271-0007	
EM 31	EMI FILTER STX222MB (TAIYO U.)	271-0007	
EM 32	EMI FILTER STX222MB (TAIYO U.)	271-0007	
EM 33	EMI FILTER STX222MB (TAIYO U.)	271-0007	
EM 34	EMI FILTER STX222MB (TAIYO U.)	271-0007	
EM 35	EMI FILTER STX222MB (TAIYO U.)	271-0007	

ALTERATION				 SEGA ENTERPRISES, LTD.	APR. 1980	9/17 '80
					ASS'Y	
				THIS DRAWING WILL IN NO WAY BE COPIED. TO BE RETURNED ON DEMAND.	CK'D	
					DRW. 151	9/14 '80
				IC BD M5 VA4 PAL-G MAIN	REV	
					837-7460	
				DESCRIPTION	PART	NO.
					SHEET 7 OF 9	

D. NO.	DESCRIPTION	PART. NO.	NOTE
EM 36	EMI FILTER STX222MB (TAIYO U.)	271-0007	
EM 37	EMI FILTER STB271KB (TAIYO U.)	271-0006	
EM 38	EMI FILTER STX222MB (TAIYO U.)	271-0007	
FB 1	BEADS INDUCTOR FBA04VA600VB (TAIYO)	271-0005-1	
FB 2	BEADS INDUCTOR FBA04VA600VB (TAIYO)	271-0005-1	
FB 3	BEADS INDUCTOR FBA04VA600VB (TAIYO)	271-0005-1	
FB 4	BEADS INDUCTOR FBA04VA600VB (TAIYO)	271-0005-1	
FB 5	BEADS INDUCTOR FBA04VA600VB (TAIYO)	271-0005-1	
FB 6	LINE FILTER 4HOLE BALUN TYPE (TAIYO)	270-5027	
FB 7	LINE FILTER RING TYPE CORES 2T (TAIYO)	270-5029	
FB 8	BEADS INDUCTOR FBA04VA600VB (TAIYO)	271-0005-1	
FB 9	BEADS INDUCTOR FBA04VA600VB (TAIYO)	271-0005-1	
FB 10	BEADS INDUCTOR FBA04VA600VB (TAIYO)	271-0005-1	
FB 11	BEADS INDUCTOR FBA04VA600VB (TAIYO)	271-0005-1	
FB 12	BEADS INDUCTOR FBA04VA600VB (TAIYO)	271-0005-1	
FB 13	BEADS INDUCTOR FBA04VA600VB (TAIYO)	271-0005-1	
FB 14	BEADS INDUCTOR FBA04VA600VB (TAIYO)	271-0005-1	
VR 1	SLIDE VOL CONT 50KB RS20H11 (ALPS)	220-5248	
SW 1	SLIDE SW HSW1699-01-010 (HOSIDEN)	509-5240-01	

ALTERATION				 SEGA SEGA ENTERPRISES, LTD. THIS DRAWING WILL IN NO WAY BE COPIED. TO BE RETURNED ON DEMAND.	APR. 29 7/17 '90
					ASS'Y
					CK'D
					DRW. 151 本 2/14-'90
				IC BD M5 VA4 PAL-G MAIN	REV
				DESCRIPTION	837-7460
				PART NO.	
				SHEET 8 OF 9	


D. NO.	DESCRIPTION	PART. NO.	NOTE
EM 16	EMI FILTER STX222MB (TAIYO U.)	271-0007	
EM 17	EMI FILTER STB271KB (TAIYO U.)	271-0006	
EM 18	EMI FILTER STX222MB (TAIYO U.)	271-0007	
EM 21	EMI FILTER STX222MB (TAIYO U.)	271-0007	
EM 22	EMI FILTER STX222MB (TAIYO U.)	271-0007	
EM 23	EMI FILTER STX222MB (TAIYO U.)	271-0007	
EM 24	EMI FILTER STX222MB (TAIYO U.)	271-0007	
EM 25	EMI FILTER STX222MB (TAIYO U.)	271-0007	

ALTERATION				 SEGA ENTERPRISES, LTD.	APR. 17 1990
					ASS'Y
				THIS DRAWING WILL IN NO WAY BE COPIED. TO BE RETURNED ON DEMAND.	CK'D
					DRW. 1/14-90
				IC BD M5 VA4 PAL-G MAIN	REV
					837-7460
				DESCRIPTION	PART NO.
					SHEET 6 OF 9


D. NO.	DESCRIPTION	PART. NO.	NOTE
C 79	CAP E 100 μ F 16V U-TYPE	150-0059	
C 84	CAP CER 0.1 μ F 16V	151-0060	1.7" 512K 1/4" 1.7" 0.16A 1.7" 1.7"
C 86	CAP E 100 μ F 10V U-TYPE	150-0047	
C 92	CAP CER 51pF 50V	151-0072	1.7" 512K 1/4" 1.7" 0.16A 1.7" 1.7"
C100	CAP CER 33pF 50V	151-0020	1.7" 512K 1/4" 1.7" 0.16A 1.7" 1.7"
C111	CAP CER 33pF 50V	151-0020	1.7" 512K 1/4" 1.7" 0.16A 1.7" 1.7"
C112	CAP CER 33pF 50V	151-0020	1.7" 512K 1/4" 1.7" 0.16A 1.7" 1.7"
C113	CAP CER 56pF 50V CH	151-0279	1.7" 512K 1/4" 1.7" 0.16A 1.7" 1.7"
JP 1	CAP E 47 μ F 10V U-TYPE	150-0062	
EM 11	EMI FILTER STX222MB (TAIYO U.)	271-0007	
EM 12	EMI FILTER STX222MB (TAIYO U.)	271-0007	
EM 13	EMI FILTER STX222MB (TAIYO U.)	271-0007	
EM 14	EMI FILTER STX222MB (TAIYO U.)	271-0007	
EM 15	EMI FILTER STX222MB (TAIYO U.)	271-0007	

ALTERATION				SEGA SEGA ENTERPRISES, LTD.		APR. 14 1990
				THIS DRAWING WILL IN NO WAY BE COPIED. TO BE RETURNED ON DEMAND.		ASS'Y
						CK'D
						DRW. 150 1/4 - '90
				IC -BD M5 VA4 PAL-G MAIN		REV
				DESCRIPTION		837-7460
						PART NO.
						SHEET 5 OF 9

D. NO.	DESCRIPTION	PART. NO.	NOTE
C 40	CAP E 1 μ F 50V U-TYPE	150-0009	
C 41	CAP E 10 μ F 16V U-TYPE	150-0023	
C 42	CAP E 1 μ F 50V U-TYPE	150-0009	
C 43	CAP E 10 μ F 16V U-TYPE	150-0023	
C 44	CAP E 1 μ F 50V U-TYPE	150-0009	
C 49	CAP E 100 μ F 10V U-TYPE	150-0047	
C 50	CAP E 220 μ F 10V U-TYPE	150-0126	
C 51	CAP E 220 μ F 10V U-TYPE	150-0126	
C 52	CAP E 100 μ F 10V U-TYPE	150-0047	
C 53	CAP E 100 μ F 10V U-TYPE	150-0047	
C 55	CAP E 10 μ F 16V U-TYPE	150-0023	
C 57	CAP E 10 μ F 16V U-TYPE	150-0023	
C 58	CAP E 1 μ F 50V U-TYPE	150-0009	
C 59	CAP E 47 μ F 10V U-TYPE	150-0062	
C 60	CAP E 47 μ F 10V U-TYPE	150-0062	
C 61	CAP E 1 μ F 50V U-TYPE	150-0009	
C 62	CAP E 1 μ F 50V U-TYPE	150-0009	
C 63	CAP E 47 μ F 10V U-TYPE	150-0062	
C 64	CAP E 10 μ F 16V U-TYPE	150-0023	
C 65	CAP E 47 μ F 10V U-TYPE	150-0062	
C 66	CAP E 47 μ F 10V U-TYPE	150-0062	
C 67	CAP E 47 μ F 10V U-TYPE	150-0062	
C 68	CAP E 47 μ F 10V U-TYPE	150-0062	
C 71	CAP E 10 μ F 16V U-TYPE	150-0023	
C 72	CAP E 10 μ F 16V U-TYPE	150-0023	
C 74	CAP E 100 μ F 10V U-TYPE	150-0047	

ALTERATION				 SEGA ENTERPRISES, LTD.	APR. 22 9/17/90
					ASS'Y
				THIS DRAWING WILL IN NO WAY BE COPIED. TO BE RETURNED ON DEMAND.	CK'D
					DRW. 国本 3/1-90
				IC-BD M5 VA4 PAL-G MAIN	REV
					837-7460
				DESCRIPTION	PART NO.
					SHEET 4 OF 9

D. NO.	DESCRIPTION	PART. NO.	NOTE
D 1	DIODE 1SR35-100A RADIAL	481-5038-01	
D 2	DIODE 1S2473 RADIAL	481-0149-01	ONE OF THESE
	DIODE 1SS133 AXIAL	481-5045	
D 3	DIODE 1SR35-100A RADIAL	481-5038-01	
L 2	PEAKING COIL 100 μ H 03TYPE RADIAL	180-5060	ONE OF THESE
	PEAKING COIL 100 μ H 02TYPE AXIAL	180-5032	
L 3	PEAKING COIL 100 μ H 03TYPE RADIAL	180-5060	ONE OF THESE
	PEAKING COIL 100 μ H 02TYPE AXIAL	180-5032	
L 5	PEAKING COIL 12 μ H 03TYPE RADIAL	180-5059	ONE OF THESE
	PEAKING COIL 12 μ H 02TYPE AXIAL	180-5033	
L 6	PEAKING COIL 100 μ H 03TYPE RADIAL	180-5060	ONE OF THESE
	PEAKING COIL 100 μ H 02TYPE AXIAL	180-5032	
L 7	PEAKING COIL 100 μ H 03TYPE RADIAL	180-5060	ONE OF THESE
	PEAKING COIL 100 μ H 02TYPE AXIAL	180-5032	
C 1	CAP E 220 μ F 16V U-TYPE	150-0159	
C 4	CAP E 100 μ F 10V U-TYPE	150-0047	
C 5	CAP E 10 μ F 16V U-TYPE	150-0023	
C 13	CAP E 10 μ F 16V U-TYPE	150-0023	
C 23	CAP E 100 μ F 10V U-TYPE	150-0047	
C 24	CAP E 100 μ F 10V U-TYPE	150-0047	
C 30	CAP E 10 μ F 16V U-TYPE	150-0023	
C 31	CAP E 10 μ F 16V U-TYPE	150-0023	
C 32	CAP E 220 μ F 10V U-TYPE	150-0126	
C 38	CAP E 10 μ F 16V U-TYPE	150-0023	

ALTERATION			 SEGA ENTERPRISES, LTD.	APR. 44 9/17/90
				ASS'Y
			THIS DRAWING WILL IN NO WAY BE COPIED. TO BE RETURNED ON DEMAND.	CK'D
				DRW. 104 9/14-'90
			IC-BD M5 VA4 PAL-G MAIN	REV
				837-7460
			DESCRIPTION	PART NO.
				SHEET 3 OF 8

D. NO.	DESCRIPTION	PART. NO.	NOTE
R 55	RES CHIP 5.6k Ω 1/8W \pm 5%	476-0562-J-08	
R 56	RES CHIP 5.6k Ω 1/8W \pm 5%	476-0562-J-08	
R 57	RES CHIP 5.6k Ω 1/8W \pm 5%	476-0562-J-08	
R 58	RES CHIP 36k Ω 1/8W \pm 5%	476-0363-J-08	
R 59	RES CHIP 4.7k Ω 1/8W \pm 5%	476-0472-J-08	
R 60	RES CHIP 4.7k Ω 1/8W \pm 5%	476-0472-J-08	
R 61	RES CHIP 4.7k Ω 1/8W \pm 5%	476-0472-J-08	
R 62	RES CHIP 4.7k Ω 1/8W \pm 5%	476-0472-J-08	
R 63	RES CHIP 4.7k Ω 1/8W \pm 5%	476-0472-J-08	
R 64	RES CHIP 10k Ω 1/8W \pm 5%	476-0103-J-08	
R 65	RES CHIP 100k Ω 1/8W \pm 5%	476-0104-J-08	
R 66	RES CHIP 30k Ω 1/8W \pm 5%	476-0303-J-08	
R 67	RES CHIP 1.2k Ω 1/8W \pm 5%	476-0122-J-08	
R 68	RES CHIP 2.2k Ω 1/8W \pm 5%	476-0222-J-08	
A R 69	RES CHIP 1kΩ 1/8W \pm5%	476-0102-J-08	NO USE
R 70	RES CHIP 2k Ω 1/8W \pm 5%	476-0202-J-08	
R 71	RES CHIP 2.2k Ω 1/8W \pm 5%	476-0222-J-08	
R 72	RES CHIP 1.2k Ω 1/8W \pm 5%	476-0122-J-08	
R 73	RES CHIP 1k Ω 1/8W \pm 5%	476-0102-J-08	
R 74	RES CHIP 33k Ω 1/8W \pm 5%	476-0333-J-08	
R 75	RES CHIP 4.7k Ω 1/8W \pm 5%	476-0472-J-08	
R 76	RES CHIP 4.7k Ω 1/8W \pm 5%	476-0472-J-08	

ALTERATION				SEGA SEGA ENTERPRISES, LTD.	APR. 24 9/17 '90	
A	VOID 橋本	12/13/90	小水		ASS'Y	
				THIS DRAWING WILL IN NO WAY BE COPIED. TO BE RETURNED ON DEMAND.	CK'D	
				PC-BD M5 VA4 PAL-G CHIP DESCRIPTION		DRW. 岡本 9/14-'90
						REV
				839-0361		
				PART NO.		
				SHEET 6 OF 6		

PART NO. : 837-8779
 DESCRIPTION : IC BD M5 VA6.5 PAL-G

LINE	LOCATE	DNO OR	PART NO.	DESCRIPTION
1.00	CHIP1	1	839-0443	PC BD M5 VA6 PAL-G CHIP
2.00	HEAT SINK	2	530-5038-02	HEAT SINK M5-02
3.00	IC 1	101	1 315-0328	IC SCN68000C8N64
4.00	IC 1	101	2 315-0555	IC MC68000P8
5.00	IC 2	103	1 315-0371-15	IC HM65256BSP-15
6.00	IC 2	103	2 315-0370-15	IC UPD42832C-15
7.00	IC 2	103	3 315-0471	IC TC51832-12
8.00	IC 3	103	1 315-0371-15	IC HM65256BSP-15
9.00	IC 3	103	2 315-0370-15	IC UPD42832C-15
10.00	IC 3	103	3 315-0471	IC TC51832-12
11.00	IC 4	105	315-5433	IC CUSTOM CHIP UPD92271
12.00	IC 6	107	315-0041	IC Z80A
13.00	IC 7	102	1 315-0298	IC UPD4168C-20
14.00	IC 7	102	2 315-0298-15	IC UPD4168C-15
15.00	IC 7	102	3 315-0298-15S	IC UPD4168C-15-SG
16.00	IC 7	102	4 315-0441-15	IC UPD4364C-15
17.00	IC 7	102	5 315-0465	IC UPD4364CX
18.00	IC 7	102	6 315-0330	IC MB8464A-15L
19.00	IC 7	102	7 315-0335	IC TMM2064-15
20.00	IC 7	102	8 315-0374	IC TMM2063-12
21.00	IC 7	102	9 315-0530	IC HM6264L-120
22.00	IC 7	102	10 315-0573	IC KM6264BL-12 DIP600
23.00	IC 7	102	11 315-0574	IC KM6264BLS-12L DIP300
24.00	IC 7	102	12 315-0618	IC HM6265L-90
25.00	IC 7	102	13 315-0457	IC HY6264LP-15
26.00	IC 7	102	14 315-0458	IC KM4264L-15
27.00	IC 8	106	315-5313	IC CUSTOM CHIP YM7101
28.00	IC 9	104	1 315-0515	IC M5M4C264L-12 ZIP
29.00	IC 9	104	2 315-0515-15	IC M5M4C264L-15 ZIP
30.00	IC 9	104	3 315-0453	IC UPD41264V-12 ZIP
31.00	IC 9	104	4 315-0423	IC MB81461-12 ZIP
32.00	IC 9	104	5 315-0481	IC HM53461ZP-12 ZIP
33.00	IC 9	104	6 315-0525	IC TMS4461-12SDL ZIP
34.00	IC 9	104	7 315-0616	IC V53C261Z10 ZIP
35.00	IC 9	104	8 315-0622	IC KM424C64Z-10 ZIP
36.00	IC 9	104	9 315-0623	IC MSM51C262-10ZS ZIP
37.00	IC 10	104	1 315-0515	IC M5M4C264L-12 ZIP
38.00	IC 10	104	2 315-0515-15	IC M5M4C264L-15 ZIP
39.00	IC 10	104	3 315-0453	IC UPD41264V-12 ZIP
40.00	IC 10	104	4 315-0423	IC MB81461-12 ZIP
41.00	IC 10	104	5 315-0481	IC HM53461ZP-12 ZIP
42.00	IC 10	104	6 315-0525	IC TMS4461-12SDL ZIP
43.00	IC 10	104	7 315-0616	IC V53C261Z10 ZIP
44.00	IC 10	104	8 315-0622	IC KM424C64Z-10 ZIP
45.00	IC 10	104	9 315-0623	IC MSM51C262-10ZS ZIP
46.00	IC 11	108	313-5089	IC YM2612
47.00	IC 12	109	1 313-5079	IC CXA1034P
48.00	IC 12	109	2 313-5144	IC AN7108
49.00	IC 13	110	313-5067	IC CXA1145P
50.00	IC 14	111	313-5020	IC LM358
51.00	IC 15	112	1 313-0092	IC MA7805UC
52.00	IC 15	112	2 313-5092	IC MC7805CT
53.00	IC 17	112	1 313-0092	IC MA7805UC
54.00	IC 17	112	2 313-5092	IC MC7805CT
55.00	OSC 1	113	230-5058	OSC 53.203424M 20PPM
56.00	D 1	114	481-5038-01	DIODE 1SR-35-100A RADIAL
57.00	D 2	115	1 481-0149-01	DIODE 1S2473 RADIAL
58.00	D 2	115	2 481-5045	DIODE 1SS133 AXIAL
59.00	D 3	114	481-5038-01	DIODE 1SR-35-100A RADIAL
60.00	L 2	117	1 180-5060	PEAKING COIL 100UH 03TYPE RA

PARTS LIST

PART NO. : 837-8779

DESCRIPTION : IC BDM5 VA6.5 PAL-G

LINE	LOCATE	DNO	OR	PART NO.	DESCRIPTION
61.00	L 2	117	2	180-5032	PEAKING COIL 100UH LAL02TA101K
62.00	L 3	117	1	180-5060	PEAKING COIL 100UH 03TYPE RA
63.00	L 3	117	2	180-5032	PEAKING COIL 100UH LAL02TA101K
64.00	L 5	116	1	180-5059	PEAKING COIL 12UH 03TYPE RA
65.00	L 5	116	2	180-5033	PEAKING COIL 12UH LAL02TA120K
66.00	L 6	143		600-5061	JUMPER WIRE 5MM
67.00	L 7	117	1	180-5060	PEAKING COIL 100UH 03TYPE RA
68.00	L 7	117	2	180-5032	PEAKING COIL 100UH LAL02TA101K
69.00	C 1	124		150-0159	CAP E 220UF 16V U-TYPE
70.00	C 4	121		150-0047	CAP E 100UF 10V U-TYPE
71.00	C 5	119		150-0023	CAP E 10UF 16V U-TYPE 20%
72.00	C 13	119		150-0023	CAP E 10UF 16V U-TYPE 20%
73.00	C 23	121		150-0047	CAP E 100UF 10V U-TYPE
74.00	C 24	121		150-0047	CAP E 100UF 10V U-TYPE
75.00	C 30	119		150-0023	CAP E 10UF 16V U-TYPE 20%
76.00	C 31	119		150-0023	CAP E 10UF 16V U-TYPE 20%
77.00	C 32	123		150-0126	CAP E 220UF 10V U-TYPE 20%
78.00	C 38	119		150-0023	CAP E 10UF 16V U-TYPE 20%
79.00	C 40	118		150-0009	CAP E 1UF 50V U-TYPE 20%
80.00	C 41	119		150-0023	CAP E 10UF 16V U-TYPE 20%
81.00	C 42	118		150-0009	CAP E 1UF 50V U-TYPE 20%
82.00	C 43	119		150-0023	CAP E 10UF 16V U-TYPE 20%
83.00	C 44	118		150-0009	CAP E 1UF 50V U-TYPE 20%
84.00	C 49	121		150-0047	CAP E 100UF 10V U-TYPE
85.00	C 50	123		150-0126	CAP E 220UF 10V U-TYPE 20%
86.00	C 51	123		150-0126	CAP E 220UF 10V U-TYPE 20%
87.00	C 52	121		150-0047	CAP E 100UF 10V U-TYPE
88.00	C 53	121		150-0047	CAP E 100UF 10V U-TYPE
89.00	C 55	119		150-0023	CAP E 10UF 16V U-TYPE 20%
90.00	C 57	119		150-0023	CAP E 10UF 16V U-TYPE 20%
91.00	C 58	118		150-0009	CAP E 1UF 50V U-TYPE 20%
92.00	C 59	120		150-0062	CAP E 47UF 10V U-TYPE
93.00	C 60	120		150-0062	CAP E 47UF 10V U-TYPE
94.00	C 61	118		150-0009	CAP E 1UF 50V U-TYPE 20%
95.00	C 62	118		150-0009	CAP E 1UF 50V U-TYPE 20%
96.00	C 63	120		150-0062	CAP E 47UF 10V U-TYPE
97.00	C 64	119		150-0023	CAP E 10UF 16V U-TYPE 20%
98.00	C 65	120		150-0062	CAP E 47UF 10V U-TYPE
99.00	C 66	120		150-0062	CAP E 47UF 10V U-TYPE
100.00	C 68	120		150-0062	CAP E 47UF 10V U-TYPE
101.00	C 71	119		150-0023	CAP E 10UF 16V U-TYPE 20%
102.00	C 72	119		150-0023	CAP E 10UF 16V U-TYPE 20%
103.00	C 74	121		150-0047	CAP E 100UF 10V U-TYPE
104.00	C 79	122		150-0059	CAP E 100UF 16V U-TYPE 20%
105.00	C 86	121		150-0047	CAP E 100UF 10V U-TYPE
106.00	C111	120		150-0062	CAP E 47UF 10V U-TYPE
107.00	C112	119		150-0023	CAP E 10UF 16V U-TYPE 20%
108.00	EM 11	126		271-0007	EMI FILTER STX222MB
109.00	EM 12	126		271-0007	EMI FILTER STX222MB
110.00	EM 13	126		271-0007	EMI FILTER STX222MB
111.00	EM 14	126		271-0007	EMI FILTER STX222MB
112.00	EM 15	126		271-0007	EMI FILTER STX222MB
113.00	EM 16	126		271-0007	EMI FILTER STX222MB
114.00	EM 17	125		271-0006	EMI FILTER STB271KB
115.00	EM 18	126		271-0007	EMI FILTER STX222MB
116.00	EM 21	126		271-0007	EMI FILTER STX222MB
117.00	EM 22	126		271-0007	EMI FILTER STX222MB
118.00	EM 23	126		271-0007	EMI FILTER STX222MB

PART NO. : 837-8779
 DESCRIPTION : IC BD M5 VA6.5 PAL-G

LINE	LOCATE	DNO OR PART NO.	DESCRIPTION
119.00	EM 24	126 271-0007	EMI FILTER STX222MB
120.00	EM 25	126 271-0007	EMI FILTER STX222MB
121.00	EM 26	126 271-0007	EMI FILTER STX222MB
122.00	EM 27	125 271-0006	EMI FILTER STB271KB
123.00	EM 28	126 271-0007	EMI FILTER STX222MB
124.00	EM 31	126 NOT USED	NOT USED
125.00	EM 32	126 NOT USED	NOT USED
126.00	EM 33	126 NOT USED	NOT USED
127.00	EM 34	126 NOT USED	NOT USED
128.00	EM 35	126 NOT USED	NOT USED
129.00	EM 36	126 NOT USED	NOT USED
130.00	EM 37	125 NOT USED	NOT USED
131.00	EM 38	126 NOT USED	NOT USED
132.00	FB 1	127 271-0005-1	BEADS INDUCTOR FBA04VA600VB-00
133.00	FB 2	127 271-0005-1	BEADS INDUCTOR FBA04VA600VB-00
134.00	FB 3	127 271-0005-1	BEADS INDUCTOR FBA04VA600VB-00
135.00	FB 4	127 271-0005-1	BEADS INDUCTOR FBA04VA600VB-00
136.00	FB 5	127 NOT USED	NOT USED
137.00	FB 6	128 270-5027	LINE FILTER 4HOLE BALUN TYPE
138.00	FB 7	129 270-5029	LINE FILTER RING TYPE
139.00	FB 8	127 271-0005-1	BEADS INDUCTOR FBA04VA600VB-00
140.00	FB 9	127 271-0005-1	BEADS INDUCTOR FBA04VA600VB-00
141.00	FB 10	127 271-0005-1	BEADS INDUCTOR FBA04VA600VB-00
142.00	FB 11	130 270-5045	LINE FILTER WIND 20UH FL5R200F
143.00	FB 12	130 270-5045	LINE FILTER WIND 20UH FL5R200F
144.00	FB 13	127 271-0005-1	BEADS INDUCTOR FBA04VA600VB-00
145.00	FB 14	127 271-0005-1	BEADS INDUCTOR FBA04VA600VB-00
146.00	FB 15	130 270-5045	LINE FILTER WIND 20UH FL5R200F
147.00	VR 1	131 220-5248	SLIDE VOL CONT 50KOHM RS20H111
148.00	SW 1	133 509-5240-01	SLIDE SWITCH HSW1699-01-010
149.00	SW 2	132 1 510-5019	TACTILE PUSH SW SKEVAA
150.00	SW 2	132 2 509-5207	TACT SW SKEVAA ALPS
151.00	CN 1	135 1 212-5106	DIN CONN 8P B-TYPE UC-0059#2
152.00	CN 1	135 2 212-5106-01	DIN CONN 8P B-TYPE DJ-008-8P
153.00	CN 1	135 3 212-5106-02	DIN CONN 8P TCS4490-01-4151
154.00	CN 3	134 209-5026	EDGE CONNECTOR 64P MITSUMI
155.00	CN 4	136 209-5027	D-SUB 9P ANGLE TYPE UI-0095#01
155.10	CN 4	136 NOT USED	NOT USED
156.00	CN 5	137 1 209-5017-01	D-SUB 9P ANGLE TYPE UC-0060#2
157.00	CN 5	137 2 209-5017-03	DIN SUB 9P ANGLE TYPE TOSK
158.00	CN 5	137 3 209-5017-04	D-SUB 9P ANGLE CMP1100-010010
159.00	CN 6	137 1 209-5017-01	D-SUB 9P ANGLE TYPE UC-0060#2
160.00	CN 6	137 2 209-5017-03	DIN SUB 9P ANGLE TYPE TOSK
161.00	CN 6	137 3 209-5017-04	D-SUB 9P ANGLE CMP1100-010010
162.00	CN 9	138 1 600-5110-02	LED SOCKET/CABLE UJ-0263#01
163.00	CN 9	138 2 600-5820	LED SKT WITH CN L=110 MM
164.00	RF MOD.	139 1 200-5086	RF MODULATOR UE3622 (G-PAL)
165.00	RF MOD.	139 2 200-5086-01	RF MODULATOR G-PAL MDMT4D011A
166.00	RF MOD.	139 3 200-5086-02	RF MODULATOR PAL-G YAA21-0496
167.00	JP 5	140 600-5941-150	CA VINYL AWG22 UL1430 L=150MM
168.00	JP 6	142 600-5941-60	CA VINYL AWG22 UL1430 L=60MM
169.00	JP 7	141 600-5941-90	CA VINYL AWG22 UL1430 L=90MM
170.00	SL CN4L	144 090-0012	SCREW LOCK
171.00	SL CN4R	144 090-0012	SCREW LOCK
172.00	SL CN5L	144 090-0012	SCREW LOCK
173.00	SL CN5R	144 090-0012	SCREW LOCK
174.00	SL CN6L	144 090-0012	SCREW LOCK
175.00	SL CN6R	144 090-0012	SCREW LOCK

PART NO. : 837-8779
 DESCRIPTION : IC BD M5 VA6.5 PAL-G

LINE	LOCATE	DNO OR PART NO.	DESCRIPTION
176.00	SL HSU	144 090-0012	SCREW LOCK
177.00	SL HSD	144 090-0012	SCREW LOCK
178.00	SL IC15	144 090-0012	SCREW LOCK
179.00	SL IC17	144 090-0012	SCREW LOCK
180.00	GRS IC15	145 601-0076	TML JNT CMPD 200G/TUBE(AMICON)
181.00	GRS IC17	145 601-0076	TML JNT CMPD 200G/TUBE(AMICON)
182.00	TS CN5L	201 012-0308	TAP SCR PH 3*8
183.00	TS CN5R	201 012-0308	TAP SCR PH 3*8
184.00	TS CN6L	201 012-0308	TAP SCR PH 3*8
185.00	TS CN6R	201 012-0308	TAP SCR PH 3*8
186.00	MS-GN4L	202 000-0308	M-SCR-PH-PH1-L-ISO-M3*8
187.00	MS-GN4R	202 000-0308	M-SCR-PH-PH1-L-ISO-M3*8
188.00	DS HSU	203 029-0227	DELTITE SCR PH M3*6
189.00	DS HSD	203 029-0227	DELTITE SCR PH M3*6
190.00	DS IC15	203 029-0227	DELTITE SCR PH M3*6
191.00	DS IC17	203 029-0227	DELTITE SCR PH M3*6
192.00	EYLET CN3L	204 1 048-0001	EYLET 3.5*7
193.00	EYLET CN3L	204 2 048-0002	EYLET 6*3.5*8
194.00	EYLET CN3R	204 1 048-0001	EYLET 3.5*7
195.00	EYLET CN3R	204 2 048-0002	EYLET 6*3.5*8

PART NO. : 837-8779
 DESCRIPTION : IC BD M5 VA6.5 PAL-G

NE	LOCATE	DNO	OR	PART NO.	DESCRIPTION
1.00	PCB	1	1	171-5963-30	PC BD M5 PAL VA5 MAIN
2.00	C 2	115		151-0265	CAP CER CP 0.1UF 25V ZF 2125
3.00	C 3	115		151-0265	CAP CER CP 0.1UF 25V ZF 2125
4.00	C 6	113		151-0307	CAP CER CP 0.022UF 50V ZF2125
5.00	C 7	113		151-0307	CAP CER CP 0.022UF 50V ZF2125
6.00	C 8	113		151-0307	CAP CER CP 0.022UF 50V ZF2125
7.00	C 9	113		151-0307	CAP CER CP 0.022UF 50V ZF2125
8.00	C 10	113		151-0307	CAP CER CP 0.022UF 50V ZF2125
9.00	C 14	113		151-0307	CAP CER CP 0.022UF 50V ZF2125
10.00	C 15	113		151-0307	CAP CER CP 0.022UF 50V ZF2125
11.00	C 16	113		151-0307	CAP CER CP 0.022UF 50V ZF2125
12.00	C 17	113		151-0307	CAP CER CP 0.022UF 50V ZF2125
13.00	C 18	113		151-0307	CAP CER CP 0.022UF 50V ZF2125
14.00	C 19	113		151-0307	CAP CER CP 0.022UF 50V ZF2125
15.00	C 20	113		151-0307	CAP CER CP 0.022UF 50V ZF2125
16.00	C 21	113		151-0307	CAP CER CP 0.022UF 50V ZF2125
17.00	C 22	113		151-0307	CAP CER CP 0.022UF 50V ZF2125
18.00	C 25	113		151-0307	CAP CER CP 0.022UF 50V ZF2125
19.00	C 26	113		151-0307	CAP CER CP 0.022UF 50V ZF2125
20.00	C 27	113		151-0307	CAP CER CP 0.022UF 50V ZF2125
21.00	C 28	112		151-0312	CAP CER CP 0.01UF 50V KB2125
22.00	C 29	105		151-0337	CAP CER CHIP 82PF 50V CH2125
23.00	C 33	112		151-0312	CAP CER CP 0.01UF 50V KB2125
24.00	C 34	108		151-0309	CAP CER CP 180PF 50V CH2125
25.00	C 35	101		151-0336	CAP CER CHIP 12PF 50V CH2125
26.00	C 37	106		151-0334	CAP CER CP 100PF 50V J CH 2125
27.00	C 39	910		NOT USED	NOT USED
28.00	C 45	111		151-0311	CAP CER CP 5600PF 50V KB2125
29.00	C 46	114		151-0269	CAP CER CP 0.1UF 25V K 2125
30.00	C 47	114		151-0269	CAP CER CP 0.1UF 25V K 2125
31.00	C 48	111		151-0311	CAP CER CP 5600PF 50V KB2125
32.00	C 69	113		151-0307	CAP CER CP 0.022UF 50V ZF2125
33.00	C 73	115		151-0265	CAP CER CP 0.1UF 25V ZF 2125
34.00	C 75	112		151-0312	CAP CER CP 0.01UF 50V KB2125
35.00	C 76	112		151-0312	CAP CER CP 0.01UF 50V KB2125
36.00	C 77	110		151-0305	CAP CER CP 1000PF 50V KB2125
37.00	C 78	103		151-0318	CAP CER CHIP 33PF 50V CH 2125
38.00	C 80	910		NOT USED	NOT USED
39.00	C 81	109		151-0310	CAP CER CP 220PF 50V SL2125
40.00	C 82	102		151-0319	CAP CER CHIP 20PF 50V CH2125
41.00	C 83	115		151-0265	CAP CER CP 0.1UF 25V ZF 2125
42.00	C 85	110		151-0305	CAP CER CP 1000PF 50V KB2125
43.00	C 87	113		151-0307	CAP CER CP 0.022UF 50V ZF2125
44.00	C 88	104		151-0270	CAP CER CP 47PF 50V K SL 2125
45.00	C 89	113		151-0307	CAP CER CP 0.022UF 50V ZF
46.00	C 90	910		NOT USED	NOT USED
47.00	C 91	113		151-0307	CAP CER CP 0.022UF 50V ZF
48.00	C 92	103		151-0318	CAP CER CHIP 33PF 50V CH
49.00	C 93	910		NOT USED	NOT USED
50.00	C 94	910		NOT USED	NOT USED
51.00	C 95	115		151-0265	CAP CER CP 0.1UF 25V ZF
52.00	C 96	101		151-0336	CAP CER CHIP 12PF 50V CH
53.00	C102	103		151-0318	CAP CER CHIP 33PF 50V CH
54.00	C103	910		NOT USED	NOT USED
55.00	C105	910		NOT USED	NOT USED
56.00	C106	103		151-0318	CAP CER CHIP 33PF 50V CH
57.00	C107	103		151-0318	CAP CER CHIP 33PF 50V CH
58.00	C108	103		151-0318	CAP CER CHIP 33PF 50V CH

PARTS LIST

PART NO. : 837-8779
 DESCRIPTION : IC BD M5 VA6.5 PAL-G


LINE	LOCATE	DNO OR PART NO.	DESCRIPTION
59.00	C109	103 151-0318	CAP CER CHIP 33PF 50V CH
60.00	C110	103 151-0318	CAP CER CHIP 33PF 50V CH
61.00	C112	103 151-0318	CAP CER CHIP 33PF 50V CH
62.00	C113	103 151-0318	CAP CER CHIP 33PF 50V CH
63.00	C114	910 NOT USED	NOT USED
64.00	C115	103 151-0318	CAP CER CHIP 33PF 50V CH
65.00	C116	103 151-0318	CAP CER CHIP 33PF 50V CH
66.00	C117	910 NOT USED	NOT USED
67.00	C118	910 NOT USED	NOT USED
68.00	C119	910 NOT USED	NOT USED
69.00	C120	910 NOT USED	NOT USED
70.00	C121	114 151-0269	CAP CER CP 0.1UF 25V K
71.00	C122	910 NOT USED	NOT USED
72.00	C123	910 NOT USED	NOT USED
73.00	C124	910 NOT USED	NOT USED
74.00	R 1	132 476-2473-J-10	RES CHIP 47KOHM 1/10W 5%
75.00	R 3	118 476-2121-J-10	RES CHIP 120 OHM 1/10W 5%
76.00	R 4	119 476-2331-J-10	RES CHIP 330 OHM 1/10W 5%
77.00	R 5	119 476-2331-J-10	RES CHIP 330 OHM 1/10W 5%
78.00	R 6	119 476-2331-J-10	RES CHIP 330 OHM 1/10W 5%
79.00	R 7	119 476-2331-J-10	RES CHIP 330 OHM 1/10W 5%
80.00	R 8	123 476-2222-J-10	RES CHIP 2.2KOHM 1/10W 5%
81.00	R 9	123 476-2222-J-10	RES CHIP 2.2KOHM 1/10W 5%
82.00	R 10	123 476-2222-J-10	RES CHIP 2.2KOHM 1/10W 5%
83.00	R 11	123 476-2222-J-10	RES CHIP 2.2KOHM 1/10W 5%
84.00	R 12	123 476-2222-J-10	RES CHIP 2.2KOHM 1/10W 5%
85.00	R 14	123 476-2222-J-10	RES CHIP 2.2KOHM 1/10W 5%
86.00	R 15	123 476-2222-J-10	RES CHIP 2.2KOHM 1/10W 5%
87.00	R 16	123 476-2222-J-10	RES CHIP 2.2KOHM 1/10W 5%
88.00	R 17	125 476-2472-J-10	RES CHIP 4.7KOHM 1/10W 5%
89.00	R 18	121 476-2122-J-10	RES CHIP 1.2KOHM 1/10W 5%
90.00	R 19	125 476-2472-J-10	RES CHIP 4.7KOHM 1/10W 5%
91.00	R 20	121 476-2122-J-10	RES CHIP 1.2KOHM 1/10W 5%
92.00	R 21	125 476-2472-J-10	RES CHIP 4.7KOHM 1/10W 5%
93.00	R 22	121 476-2122-J-10	RES CHIP 1.2KOHM 1/10W 5%
94.00	R 23	124 476-2332-J-10	RES CHIP 3.3KOHM 1/10W 5%
95.00	R 24	120 476-2102-J-10	RES CHIP 1KOHM 1/10W 5%
96.00	R 25	117 476-2750-J-10	RES CHIP 75 OHM 1/10W 5%
97.00	R 26	120 476-2102-J-10	RES CHIP 1KOHM 1/10W 5%
98.00	R 27	121 476-2122-J-10	RES CHIP 1.2KOHM 1/10W 5%
99.00	R 28	121 476-2122-J-10	RES CHIP 1.2KOHM 1/10W 5%
100.00	R 29	120 476-2102-J-10	RES CHIP 1KOHM 1/10W 5%
101.00	R 30	128 476-2243-J-10	RES CHIP 24KOHM 1/10W 5%
102.00	R 31	123 476-2222-J-10	RES CHIP 2.2KOHM 1/10W 5%
103.00	R 32	117 476-2750-J-10	RES CHIP 75 OHM 1/10W 5%
104.00	R 33	117 476-2750-J-10	RES CHIP 75 OHM 1/10W 5%
105.00	R 34	133 476-2513-J-10	RES CHIP 51KOHM 1/10W 5%
106.00	R 35	123 476-2222-J-10	RES CHIP 2.2KOHM 1/10W 5%
107.00	R 36	132 476-2473-J-10	RES CHIP 47KOHM 1/10W 5%
108.00	R 37	133 476-2513-J-10	RES CHIP 51KOHM 1/10W 5%
109.00	R 38	123 476-2222-J-10	RES CHIP 2.2KOHM 1/10W 5%
110.00	R 39	132 476-2473-J-10	RES CHIP 47KOHM 1/10W 5%

PART NO. : 837-8779
 DESCRIPTION : IC BDM5 VA6.5 PAL-G

LINE	LOCATE	DNO OR PART NO.	DESCRIPTION
111.00	R 40	127 476-2103-J-10	RES CHIP 10KOHM 1/10W 5%
112.00	R 41	127 476-2103-J-10	RES CHIP 10KOHM 1/10W 5%
113.00	R 42	127 476-2103-J-10	RES CHIP 10KOHM 1/10W 5%
114.00	R 43	127 476-2103-J-10	RES CHIP 10KOHM 1/10W 5%
115.00	R 49	117 476-2750-J-10	RES CHIP 75 OHM 1/10W 5%
116.00	R 50	117 476-2750-J-10	RES CHIP 75 OHM 1/10W 5%
117.00	R 51	132 476-2473-J-10	RES CHIP 47KOHM 1/10W 5%
118.00	R 52	132 476-2473-J-10	RES CHIP 47KOHM 1/10W 5%
119.00	R 53	123 476-2222-J-10	RES CHIP 2.2KOHM 1/10W 5%
120.00	R 54	123 476-2222-J-10	RES CHIP 2.2KOHM 1/10W 5%
121.00	R 55	126 476-2562-J-10	RES CHIP 5.6KOHM 1/10W 5%
122.00	R 56	126 476-2562-J-10	RES CHIP 5.6KOHM 1/10W 5%
123.00	R 57	126 476-2562-J-10	RES CHIP 5.6KOHM 1/10W 5%
124.00	R 58	131 476-2363-J-10	RES CHIP 36KOHM 1/10W 5%
125.00	R 59	125 476-2472-J-10	RES CHIP 4.7KOHM 1/10W 5%
126.00	R 64	127 476-2103-J-10	RES CHIP 10KOHM 1/10W 5%
127.00	R 65	134 476-2104-J-10	RES CHIP 100KOHM 1/10W 5%
128.00	R 66	129 476-2303-J-10	RES CHIP 30KOHM 1/10W 5%
129.00	R 67	121 476-2122-J-10	RES CHIP 1.2KOHM 1/10W 5%
130.00	R 68	910 NOT USED	NOT USED
131.00	R 69	910 NOT USED	NOT USED
132.00	R 70	122 476-2202-J-10	RES CHIP 2KOHM 1/10W 5%
133.00	R 71	123 476-2222-J-10	RES CHIP 2.2KOHM 1/10W 5%
134.00	R 72	121 476-2122-J-10	RES CHIP 1.2KOHM 1/10W 5%
135.00	R 73	120 476-2102-J-10	RES CHIP 1KOHM 1/10W 5%
136.00	R 74	130 476-2333-J-10	RES CHIP 33KOHM 1/10W 5%
137.00	R 77	125 476-2472-J-10	RES CHIP 4.7KOHM 1/10W 5%
138.00	R 78	125 476-2472-J-10	RES CHIP 4.7KOHM 1/10W 5%
139.00	R 79	125 476-2472-J-10	RES CHIP 4.7KOHM 1/10W 5%
140.00	R 80	125 476-2472-J-10	RES CHIP 4.7KOHM 1/10W 5%
141.00	R 81	125 476-2472-J-10	RES CHIP 4.7KOHM 1/10W 5%
142.00	R 82	125 476-2472-J-10	RES CHIP 4.7KOHM 1/10W 5%
143.00	R 83	125 476-2472-J-10	RES CHIP 4.7KOHM 1/10W 5%
144.00	R 84	125 476-2472-J-10	RES CHIP 4.7KOHM 1/10W 5%
145.00	R 85	116 476-2100-J-10	RES CHIP 10 OHM 1/10W 5%

PARTS LIST

PART NO. : 839-0262
DESCRIPTION : ASSY SUB BOARD3 M5

LINE	DNO	OR	Q/U	SB PART NO.	DESCRIPTION
1.00	1		1.000	171-5801	PC BD M5 USA SUB 3
2.00	101	1	1.000	212-5004	PIN PLUG FOR DC/NP UC-005G#1
3.00	101	2	1.000	212-5004-01	PIN PLUG FOR DC/NP DJ-005P-A
4.00	101	3	1.000	212-5004-02	 PIN PLUG FOR DC/NP HEC0470-01

PART NO. : 839-0199
DESCRIPTION- : ASSY SUB BOARD M5

LINE	LOCATE	DNO OR PART NO.	DESCRIPTION
1.00	PCB	1 171-5674	PC BOARD M5 SUB
2.00	CN10	101 210-5035	STEREO MINI JK HSJ0871-01-440

MEGA DRIVE

PAL-G (GERMANY)

S C H E M A T I C D I A G R A M

